

RIVERLAND





DON'T LEAVE THE RIVERLAND WITHOUT TRYING THE BEST

Eleni's at Mallee Estate

This exceptional Greek restaurant is found on the outskirts of the Riverland's premier food destination, Renmark.

Nestled amongst vineyards and famous for its chargrilled octopus, traditional moussaka and of course lamb souvlakia, Eleni's has been delighting its guests' tastebuds for the last 5 years.

My husband decided to have the Ouzo tasting flight which gave him the chance to try 4 ouzos from Eleni's extensive range. I'm so glad we came as a large group so we could share one of nearly everything on the menu. Every dish was exceptional, it was fresh, full of flavour and cooked so well. I have never had such soft calamari. To find seafood like that so far from the ocean was astounding!

When our family visits a new area, we always ask the locals where the best place to dine is, in this case the overwhelming response was

“ you must
try Eleni's! ”

We were not disappointed.

We arrived early and had a cocktail on the lawn area while the kids played connect four and giant Jenga. I had the gimlet, which was made with a unique Greek gin, that I have never seen anywhere else, called Votanikon. The distinct flavor of the gin made it one of the best gimlets I've ever tried.

We ordered loukamathes, baklava and bougatsa for dessert. OH MY GOODNESS! The serving sizes were huge. I enjoyed the bougatsa which was served with the most stunning citrus syrup, but the kids could not get enough of the loukamathes (Greek donuts).

After dinner we headed into 'The Estate Lounge' where the kids sat on one of the beautiful Chesterfield lounges and played UNO. We grownups enjoyed yet another drink whilst playing darts.

Be warned if you stop in at Eleni's you will not want to leave. There are endless amounts of activities to keep the kids entertained, and an abundance of unique experiences for the adults to enjoy. The food is second to none, the service incredible and the wine was perfection. We cannot wait to come back!



8595 1099 | 20055 Renmark Ave, Renmark
malleeestate.com.au



STAY.DRINK.RELAX.PLAY.FLOAT

WELCOME TO WILKADENE



STAY AT WILKADENE COTTAGE



DRINK AT WOOLSHED BREWERY

RELAX ON THE BANKS OF THE MURRAY



PLAY IN THE INTERACTIVE RIVER SYSTEM

FLOAT ON A WILKADENE HOUSEBOAT



WOOLSHED BREWERY
'Brew with a view'

WILKADENE.COM.AU
WILKINSON ROAD MURTHO VIA RENMARK
ACCESSIBLE BY ROAD OR RIVER

 @WOOLSHEDBREWERY  @WOOLSHEDBREWERY





RIVERLAND
GOOD TIMES FLOW

There's a place where the spirit of nature runs free
and uninhibited, **zigging** where others zag, and
then **zagging** where it pleases. A setting for a
magical destination like nowhere else on Earth.
Welcome to the Riverland.

RIVERLAND

SOUTH AUSTRALIA

Contents

- 8 Nature's Awe**
- 10 Haven of Flavours**
- 14 Natural Indulgence**
- 16 Events**
- 17 Fun and Thrills**
- 18 Sleep and Dream**
- 20 History Brought to Life**
- 22 Our Region**
- 24 The West**
Waikerie, Morgan, Blanchetown
- 30 Regional Map**
- 32 Central**
Loxton, Barmera, Berri
- 42 The East**
Renmark, Paringa
- 52 Itineraries and more**
- 54 Destination for all Travellers**
- 56 RV Parks and Public Campgrounds**
- 57 Top Travel Tips**
- 58 Advertisers Directory**

Cover image: Kate Dinning

Disclaimer: All information contained in this publication was correct at the time of printing. All advertisements are accepted on the basis that their content is true and accurate and that they are in no way misleading. Taylor Group Media do not accept any liability to any person claiming they have been misled by material contained herein. Copyright Destination Riverland Inc.

Images ©

Accolade Wines, Francesco Vicenzi
Grant Schwartzkopff, Hayden Faulkner, Isaac Forman,
Kristy Billing @gypsyandherwild,
Loveday 4x4 Adventure Park, Mark Bondarenko
Michael Waterhouse, DreamPic Photography
Mish & Kirk Ryan-Welsh @mishandkirk
Riverland Wine, South Australian Tourism Commission
The River Vista, Waikerie Golf & Country Club

Published by Taylor Group Media
(08) 8686 8000 | ads@murraypioneer.com.au



The West

PAGES 24-29



Central

PAGES 32-41



The East

PAGES 42-50

#visitriverland
#riverlandsa
#myriverland

visitriverland.com.au

@riverlandsouthaustralia
/RiverlandSouthAustralia

Destination for all seasons

Whatever the season, you can immerse yourself in the region and let the good times flow.



SPRING

With sunny days, stunning scenery and mild temperatures, spring is a desirable time to visit the Riverland.

Try a hit of golf on the lush courses throughout the region, or glide on the glassy surface of the river on a kayak, nestled close to nature.

The events calendar is jam packed in spring. Don't miss the annual Riverland Rose and Garden Festival in October, where the entire region and surrounds will be in bloom, followed by the award-winning Riverlotion Wine & Food Festival.



SUMMER

Enjoy any activity that involves the sunshine and cool river water in the popular summer months. That includes wakeboarding, paddleboarding, kneeboarding, water skiing or even wakesurfing.

One of the safest places in the Riverland to swim, water ski, tube or biscuit is at Lake Bonney in Barmera. Fresh fruit, vegetables and seasonal produce is always on hand, so a trip to a nearby roadside stall is a must! Finish off your day by dining in the cool of the region's many eateries.



AUTUMN

Discover a vibrant palate of colours, flavours and experiences in autumn in the Riverland. With a stunning landscape, autumn is an ideal time to take a hike or scenic trip by canoe or paddlesteamer.

Further inland, the canopies of fruit orchards turn red as their autumn leaves take shape. If you prefer your produce truly decadent, buy some dried or chocolate dipped fruit or local produce to take home from one of the region's Visitor Information Centres. As the day ends, take to the clifftops to marvel at incredible views.



WINTER

Escape the city rat race for winter in the Riverland. Gather your friends or family and share stories around a warm campfire in one of the spectacular National Parks, relax and rejuvenate in a cosy B&B or hire a luxury houseboat and breathe in the crisp winter air while cruising downstream.

Discover the abundance of wildlife while experiencing our walking trails or paddling through the backwaters. Warm your soul with delicious flavours at many of the cellar doors, distilleries, pubs and restaurants in the region.

Scan
to find out more



Nature's Awe

The more you travel through the winding bends of the Riverland, the more you'll discover the majestic beauty and awe-inspiring landscapes of the region. It is a region that is supremely connected to nature, through its diverse range of ecosystems, giant limestone cliffs, wetlands, mallee scrub and abundant birdlife.

Soak in the sounds and scents of what is quintessentially Australian in the heart of the Riverland. Listen to the bird calls in the river red gums, marvel at the stunning ochre-coloured cliff tops, or spend the evenings stargazing.

National parks, conservation parks and reserves abound. Freshwater Lake Bonney

is the perfect place to enjoy nature's beauty while cooling off and enjoying a swim. Enjoy the Riverland throughout the seasons, where winters are mild and call for cosy campfires, and summers are spent soaking up the warm sunshine.

And speaking of sun, the Riverland boasts sensational sunsets and sunrises, which gleam off waterways, making you wonder where the water ends, and the sky begins. Take it all in on a drifting houseboat and look up at riverbanks that rise high above you like mountains.

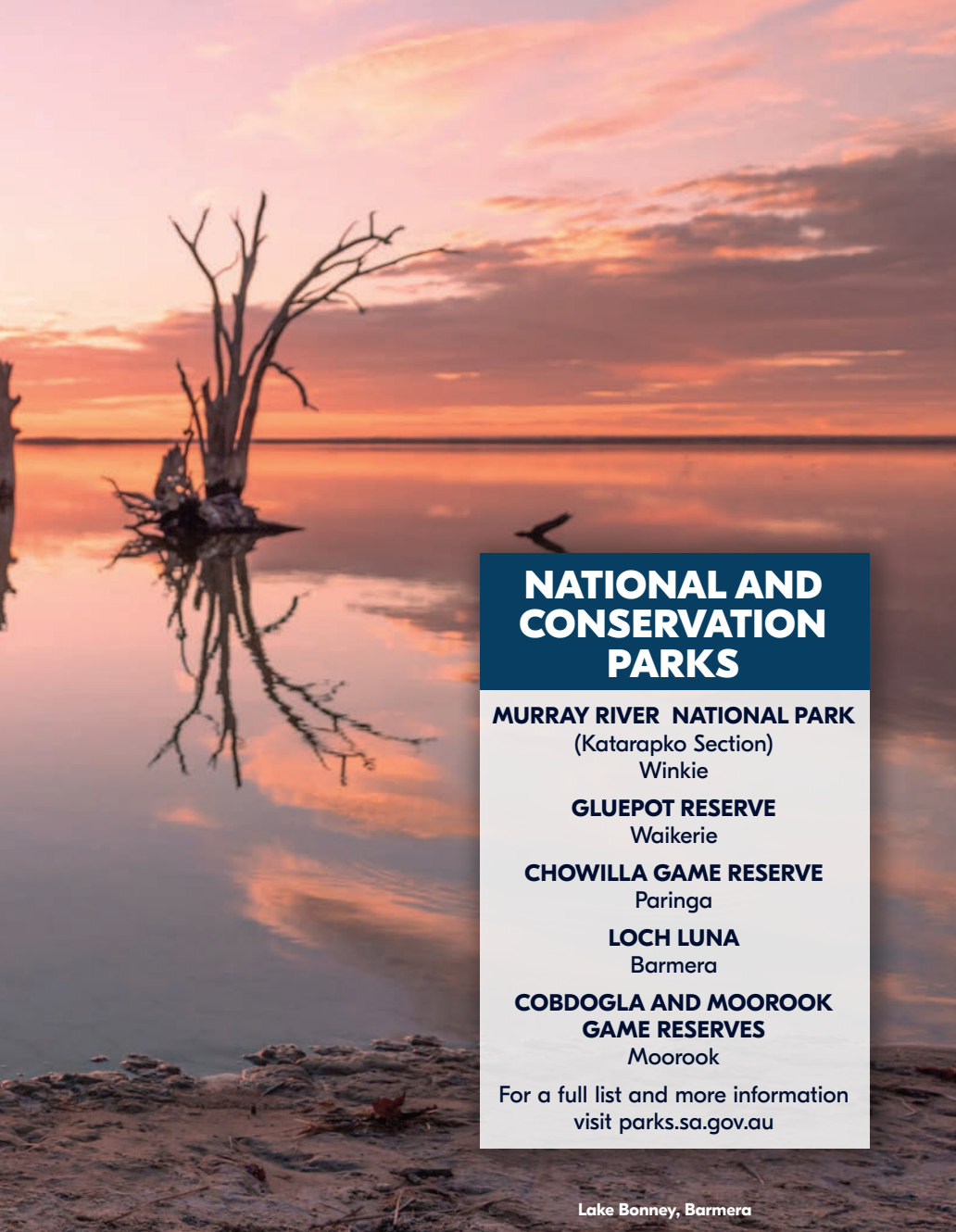
Budding artists, grab your easel and find that perfect spot to create your next masterpiece. Photographers will be sure to find inspiration in the captivating layers of bushland, floodplains, cliffs, watercourses, creeks, landscapes, and wildlife.

WONDROUS WALKS

Set off on one of the walks around the region's national parks. There are plenty of cliff top walks, trails, and wetlands paths to explore.

Plan ahead to partake in the award-winning Murray River Walk, one of the Great Walks of Australia, or take a bike and enjoy the Paringa Paddocks Trail near Renmark. Marvel at wildlife on the Katarapko Trail in the Murray River National Park, starting in Berri.

Enjoy leisurely tours at Banrock Station Wine and Wetland Centre where walking trails wind around the beautifully restored wetlands.



NATIONAL AND CONSERVATION PARKS

MURRAY RIVER NATIONAL PARK
(Katarapko Section)
Winkie

GLUEPOT RESERVE
Waikerie

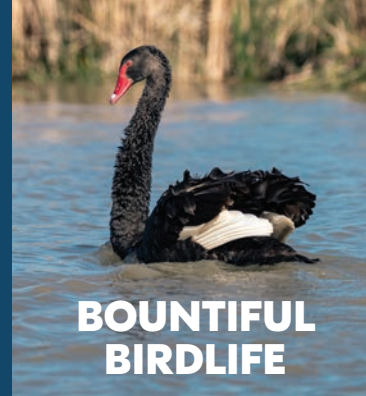
CHOWILLA GAME RESERVE
Paringa

LOCH LUNA
Barmora

**COBDOGLA AND MOOROOK
GAME RESERVES**
Moorook

For a full list and more information
visit parks.sa.gov.au

Lake Bonney, Barmora



BOUNTIFUL BIRDLIFE

Birdlife is the backbone of the Riverland, with a stunning variety of more than 200 species of unique birds thanks to its network of national parks, protected wetlands and mallee scrub.

The river region attracts a plethora of birdlife of all styles and diversity from common water birds, such as pelicans and swans, through to the rarer, such as the Endangered Regent Parrot and the Sacred Kingfisher.

For the serious twitcher, study the Waikerie Bird Watcher's trail to know where to spot White-plumed Honeyeaters, Rainbow Bee-eaters, Fairy-Wren or Red-capped Robins, just to name a few.

Banrock Station has a boardwalk which offers brilliant viewing of bird hides situated along the way; a great way to see birdlife of the region in the one spot.

Savour the best Riverland food and wine...

while staying on a luxurious houseboat, in awe of the cliffs on sunset and our amazing wildlife, immersed in the history, culture, nature and beauty of our river landscapes. Our award winning multiday guided walks, safaris and escapes will reveal the magic of the Murray River!



0417 533 063
murrayrivertrails.com.au

Haven of Flavours

With an endless bounty of local seasonal produce, the Riverland has all the ingredients for a delicious gourmet getaway. Heralded as South Australia's food bowl, it's a recipe for a local gastronomic feast.

No trip to the Riverland is complete without indulging in the region's freshest fruit and vegetables. There's an abundance of almonds, stone fruit, citrus, grapes and olives, which can be found at local providores, visitor information centres (VIC's), roadside stalls and cellar doors.

Choose from an array of friendly pubs, small riverbank cafes and tasty restaurants with river views. Or, if you want to soak up the atmosphere and spirit of the riverbank, enjoy a picnic under a gum tree with the sun on your back.

No matter where you dine, you'll be treated to some of the freshest produce, plated creatively by our chefs, using local Murray cod, medjool dates, organic meats and balsamic vinegar, along with a dose of true-blue Riverland hospitality.



TWENTY THIRD STREET DISTILLERY promises a range of bespoke experiences, including tasting flights, distillery tours and private gin blending masterclasses. Kick back and sip their award-winning spirits.

The restaurant distills fresh Riverland produce, artisanal goods and modern flair into a relaxed dining experience.

OPEN Monday to Wednesday + Sunday // 10am - 4pm
Thursday to Saturday // 10am - 10pm.

Corner of 23rd Street and Renmark Avenue, Renmark SA 5341
Ph/08 8586 8500 www.23rdstreetdistillery.com.au

TWENTY THIRD STREET DISTILLERY





TREAT YOUR TASTEBUDS

A trip to the Riverland isn't complete without a stop at Illalangi Gourmet Foods at Waikerie, which stocks a range of award-winning delights.

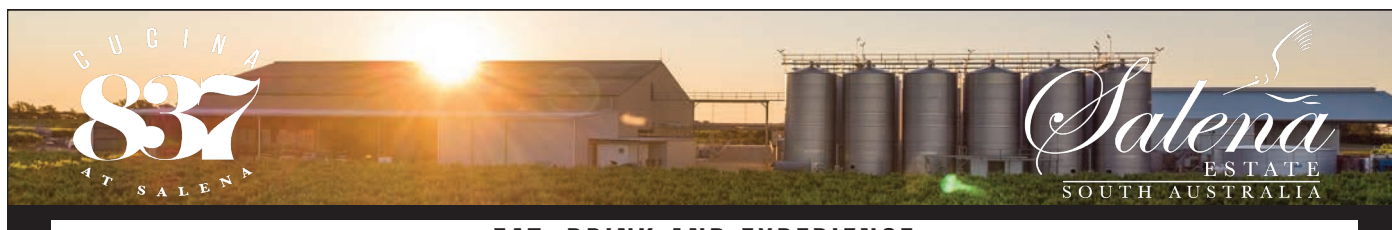
The world's best almonds can be had at Almondco Almond Hut, and while you're in Renmark head to Arrosto Coffee in the town's former fire station and stock up on locally roasted coffee beans.

DRINK WITH US

Relaxing in the Riverland can be thirsty work. Luckily, the Riverland's innovative producers have developed an impressive array of beer, cider, spirits, and fruit juices to quench your thirst.

Fast emerging as a producer of world class wines, wineries like 919 Wines, Burk Salter Boutique Winery, Mallee Estate, Salena Estate, Banrock Station, and Whistling Kite Wines are making a lasting impression. Taste over 20 different wineries at the Riverland Wine Centre.

Discover a utopia of spirits at Twenty Third Street Distillery or visit the biggest winery in the southern hemisphere at Berri Estates. At the Woolshed Brewery, enjoy craft beers overlooking a magnificent river bend, and if you're Renmark-bound, take the Angoves St Agnes Barrel Hall tour.



EAT, DRINK AND EXPERIENCE
the best of the Riverland



HEAD TO OUR WEBSITE TO SEE OUR OPENING HOURS, PURCHASE SALENA ESTATE WINE OR TO MAKING A BOOKING!

+61 (0)8 8584 1333

reception@salenaestate.com.au

www.salenaestate.com.au





DID YOU KNOW...

- The Riverland is the largest wine-producing region in Australia, and home to more than 900 wine grape growers.
- The Riverland is home to more than 5400 hectares of citrus trees across 323 orchards.
- The Riverland has more than 11,163 hectares of almond plantings.

Discover the flavours of the Riverland

The Riverland is a foodie's dream. Here you can find fresh flavours wherever you turn - whether it be a garnish for your drinks, ingredients for a local grazing plate, a dine-in experience, or simply some tastes to take home with you. Alongside many of our favourite tastes, you'll find surprises such as capers, jujubes, dates and persimmons.

ALMONDS - If you've ever seen an almond tree blossoming, you'll understand it when we say they're a showstopping sight (late winter/early spring, is when they're in full bloom). With the Riverland growing 20% of Australia's almond trees, it's one of the biggest, and most spectacular crops.

GRAPES - Vineyards make a picturesque backdrop to much of the Riverland. It's home to 10 major wineries and more than 25 boutique wineries, so it's not hard to spot a reputable estate while cruising through the region. Rare varietal grapes are a Riverland speciality, so if you're after a new style of wine, then this is the place for you.

OLIVES - Riverland olive oil has earned its place as a popular ingredient in daily cooking, but what about the olives behind the oil? Olives flourish when there's good drainage and cool winters, with hot dry summers, making the Riverland the ideal place for high-quality, fresh

production, and some of the tastiest little picnic snacks you can imagine. Olives are harvested or hand-picked between April and June.

CITRUS - The Riverland is famous for its spectacular citrus crops. Growers have been producing premium fresh fruit here for generations. Juicy oranges are by far the most popular product, with easy peeling mandarin and tangelo varieties growing in popularity. Fresh fruit can be found all over the Riverland. Stop in at a roadside stall, or pick some up at the local deli or supermarket.

STONE FRUIT - Rows upon rows of fruit trees are a common sight across the Riverland and among them are the region's premium stone fruit orchards. Take your pick from apricots, nectarines, peaches, cherries or plums — in the fresh or dried variety (and here's a tip from the growers - the sweetest stone fruit is the most colourful).



An Australian Government Initiative



MURRAYLANDS & RIVERLAND SA

This project was funded by the Australian Government under the Murray — Darling Basin Economic Development Program.

The Agri Food Tourism Development Program is an initiative of Regional Development Australia Murraylands and Riverland.

For more information, visit rdamr.com.au

Industry data sourced from Riverland Wine, Citrus Australia and Almond Board of Australia.



*Now
all we need
is you!*



 **Loxton Hotel**
One of SA's great country pubs.

www.loxtonhotel.com.au | e: loxtonhotel@loxtonhotel.com.au | 08 8584 7266 | 1800 656 686



Scan
to find out more



Natural Indulgence

Unwind, revitalise, and immerse yourself in the Riverland, whilst also being connected and at one with the natural surrounds. Enjoy a sleep in and awaken from your swag with complete solitude where your only neighbours are pelicans. Or bask in the afternoon sunshine outside your caravan while listening to the tranquil water lapping on the nearby riverbank.

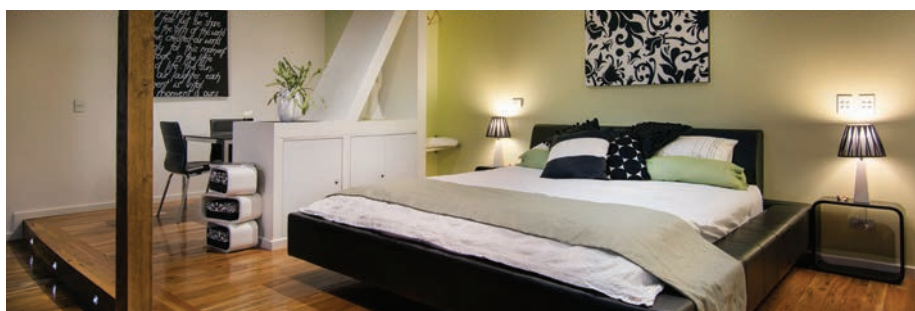
Treat yourself to a profusion of fresh fruit and seasonal vegetables on offer. Or for the sweet tooth, why not try some of the region's best dried fruit, dipped in chocolate? And after you have fuelled your body, drift downstream on a canoe, and take in the stunning scenery.

As for the landscape, the Riverland is a kaleidoscope of breath-taking scenery, spectacular birdlife and natural vistas. This is a place that encapsulates the very essence of nature, whilst offering

guests a haven of peace to soak up the tranquillity and leave you in a state of calm.

Walking through the mallee scrub and bushland, you will instantly feel de-stressed. Large river red gums silhouette against the ochre cliffs. At sunset, gather your loved ones and watch the sun set over the glistening water and let the world go by.

GOOD TIMES FLOW



Pike River Luxury Villas and Woolshed

Total luxury in the heart of South Australia

Lift your spirit and relax your mind in total luxury at Pike River. Enjoy stunning views in our fully self-contained luxury villas. Our beautifully refurbished "Woolshed" provides unique accommodation

for small or large groups. Our function facilities, with panoramic views of the Murray, are perfect for weddings, business functions, and family gatherings. Visit our website for more information.

8 Pike Creek Road, Lyrup
P 0428 831 045
E caire@pikeriver.com.au
pikeriver.com.au



INDULGE IN THE RIVERLAND

- Soak up the scenery and feel yourself de-stress
- Watch the sun setting on the ochre cliffs
- Enjoy a picnic under a tree with the sun on your back
- Turn your phone off and listen to the birds calling
- Float downstream on a luxury houseboat
- Roll out a yoga mat on a grass clearing overlooking the river

The River Vista



Rivergum Cruises

Enjoy uninterrupted views along the picturesque banks of the River Murray

Cruise the River Murray in style on board Qatar, a luxurious river cruiser, for an exclusive tour along the river from Waikerie. See the unique bird life, native flora, fauna and stunning 100-foot limestone cliffs. Qatar has a licensed bar and can cater for up to 11 passengers. Short two-hour cruises are popular as well as full-day tours to Leonard Norman Drive, Waikerie
P 0477 333 896
E info@rivergumcruises.com.au
www.rivergumcruises.com.au

local tourist destinations. You can even design your own cruise to suit what you want to do; stop for a swim and enjoy a barbecue lunch with striking views of the Murray and surrounding landscape. Contact Rivergum Cruises today about getting on board for a memorable experience!



JANUARY 26

Australia Day

Celebrate Australia Day in true Riverland style.

FEBRUARY

Riverland Dinghy Derby & Renmark Club Dash for Cash

Modified dinghies battle it out for pole position.

MARCH

SA Carp Frenzy

Test your fishing skills at Lake Bonney.

River Fringe

Riverside towns come alive with their own Riverland-styled fringe.

Renmark Rocks On

A weekend full of Rock 'n' Roll music, markets, dancing and a show 'n' shine.

APRIL

Tasting Australia

Let the Good Times Flow - a Feast of the Riverland.

Murray Man Triathlon Festival

Swim, bike, run! Join the journey in April.

MAY

True Grit

True Grit winds through 1100-acres of property at Caudo Vineyard.

JUNE

Illuminate In Depth

Illuminate Adelaide will shine a spotlight in the Riverland.

um, excuse me...

A spectacularly fun multimedia work by Luku Kuku in Barmera.

SEPTEMBER

Riverland Field Days

Stalls, exhibits, events and more on a grand scale.

OCTOBER

Riverlotion Wine & Food Festival

Experience the best of the region's food, wine and produce over 3 days at a range of venues.

Loxton Show

Featuring livestock competitions, machinery exhibitions, trade sites and side shows.

Riverland Rose & Garden Festival

See the region blossom with open gardens, markets, displays, events and more.

DECEMBER

Loxton Lights Festival

See the wonders of the Christmas lights in the town of Loxton.

SHINE's Animated Christmas Projection

An animated Christmas Lights Spectacular by Little Town Productions.

Riverland Christmas Festivities

Contact the local Visitor Information Centre's for more information.

Scan
to find out more



Good Times Flow

From food festivals and field days to motorsport races and water competitions, the Riverland has a wealth of events to fill your calendar.

Celebrate Australia Day with the locals in true Aussie style in January or see how the towns come alive in March for the 2022 **River Fringe**.

The Riverland town of Renmark will host a regional activation of Illuminate Adelaide. Coming in June 2022, **Illuminate In Depth** will be a large-scale multimedia project featuring projection, lighting and soundscape over the Murray River.

Also in June, a multimedia work by Luku Kuku titled '**um, excuse me but that wall is looking at me...**' will be at Bonney Theatre in Barmera.

Don't miss the iconic **Riverland Field Days** in September, featuring an array of exhibits and events, live entertainment and a food and wine area.

Riverlotion Wine & Food Festival is a must-see event in October each year. It features 3 days of food, wine, and entertainment at a range of venues and cellar doors across the region.

And in December, visitors come from far and wide to see the Christmas displays and events in the Riverland, including **Loxton Lights Festival**.

Fun and Thrills

If you love adventure and the great outdoors, you'll love the many inviting attractions, family friendly activities and wildlife encounters the Riverland has to offer.

TO DO

- Go mountain bike riding on the Moorook and Kingston-On-Murray Trail
- Hire a buggy at Loveday 4x4 Adventure Park
- Go camping at Murray River National Park Katarapko
- Walk the Martin Bend Wetland Walk
- Explore Hart Lagoon Walking Trail or Waikerie Clifftop Walk
- Take a self-guided 'canoe camping' expedition with Canoe Adventures
- Learn about the river's biodiversity with a sunset kayak tour with Canoe the Riverland.

ACTION PACKED

With the river at the heart of the region, there's plenty of fun to be had on the water. From water skiing and wakeboarding to wakesurfing and tubing, lap it up on the river!

Enjoy a hit at one of the five spectacular golf courses or take a trip to Loveday 4x4 Adventure Park for rally driving, jet ski tours and an obstacle course.

FAMILY FUN

The Riverland is a place where family memories are made. The kids will love the multitude of playgrounds, walking tracks and skate parks to choose from.

Spend quality time with your family aboard a private houseboat or choose from one of our Caravan Parks that have great family activities like mini golf, outdoor movies, splash parks, bikes, canoes and more!

THE WATER'S EDGE

Cool off from the sun with a dip in the river or the safe swimming areas of Lake Bonney.

Try a multitude of fun water sports, glide along the water on your stand-up paddleboard or take a leisurely cruise in a boat.

Weave your way through the picturesque, meandering backwaters by canoe or sit on the bank as you try your hand at fishing.



The Villas - Walkerie Golf & Country Club

Sleep and Dream

From five-star luxury, bespoke villas and riverside shacks, to floating houseboats and off the grid cabins, the accommodation options in the Riverland are as unique as they are diverse, so make sure you book in for a few nights to really escape the pace and immerse yourself in the region.

Surrender to mother nature as you wake to birds, not alarm clocks. Laugh around the warmth of a campfire before bed. And, at the day's end, fall asleep to the soft sounds of the Australian landscape.

The Riverland provides plenty of accommodation diversity including holiday homes, hotels, motels, apartments, cottages, retreats, cabins and B&Bs.

There's also holiday and caravan parks and RV options for independent travellers. Most of the major hotels in the region have beds for the night on-premises or as an attached motel offering.

For something truly unique, meander downstream on a luxury houseboat, where the water is your backyard. As you are the captain, you can explore the remote natural beauty of the River Murray on your own path without a soul in sight.

Looking for something a little more luxe? We have you covered. Treat yourself to one of the region's five star retreats, offering pure indulgence with unparalleled river views and self-contained private villas in secluded spots surrounded by nature.

Choose from an array of family friendly accommodation options and holiday parks, where the kids will never want to leave.

You can live like a local in a holiday home, river shack or bed and breakfast, where you can book in for a weekend, or linger longer.

UNDER THE STARS

If you have a caravan in tow, there's plenty of picturesque parks and public campgrounds to choose from. There is also cabin accommodation at every park, suitable for both couples and families.

And for a night under one of the clearest skies in the state, there's plenty of clearings to set up a swag, including the beautiful Murray River National Park.

You'll need a permit to stay overnight, which needs to be booked before you go (parks.sa.gov.au).

Renmark Houseboats

Relax and enjoy the wilderness of the mighty Murray River aboard one of Renmark Houseboats' fine fleet!

Formerly known as Warriuka Houseboats, Renmark's fleet of nine vessels range from two to five bedrooms. Dinghies and kayaks available for hire and friendly staff can help out with ice and fuel runs and grocery top ups. Selected houseboats are pet friendly (by arrangement, fees apply).



Liba Liba Parade, Renmark | 0408 839 494 | renmarkhouseboats.com.au



REMARK
HOUSEBOATS

STAY & PLAY

AT DISCOVERY PARKS - LAKE BONNEY



A waterfront holiday for the whole family on the banks of Barmera's magnificent freshwater Lake Bonney.

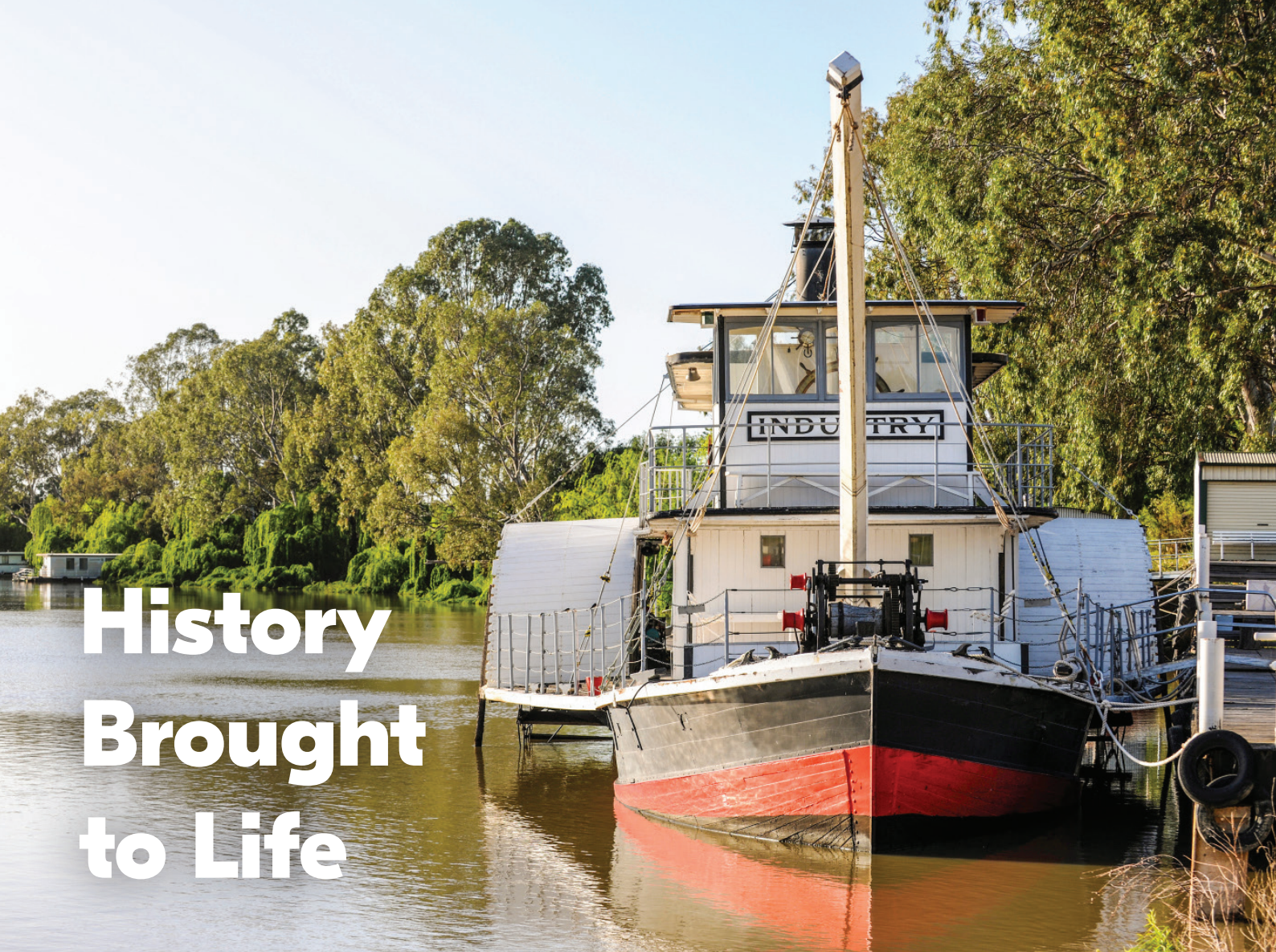


BOOK NOW

discoveryholidayparks.com.au



DISCOVERY PARKS - LAKE BONNEY Lakeside Drive, Barmera SA 5345 | (08) 8588 2234



History Brought to Life

The Riverland is steeped in history and heritage that entices any traveller seeking answers to a diverse and enchanted landscape. Around every twist of the river, corner of the road, or tree that bounds, there is a story to be told. Stories that date back thousands of years and are entrenched in the antiquity of the land.

Let's start with the First Peoples of the River Murray and Mallee, who have a long connection with the river, and the foundation of their existence is inscribed on the landscape. One such site is the Lake Bonney, which was originally known as Nookamka, a significant Aboriginal cultural site in South Australia. Evidence of the Indigenous way of life remains around Lake Bonney and surrounds today.

Then came the colonial history of steamboats plowing the waters that were the arteries of life for the nation. The navigation of this stretch of the River Murray marks the arrival of the first pioneers in the area — attracting those keen to seek their fortune through the development of local agriculture. In 1830, Captain Charles Sturt and his crew rowed their 27-foot whaleboat on a historic voyage of exploration of the Murray River. Moored at Renmark, the PS Industry provides a reminder of the bygone times. You can hear the unique sounds of the paddles on water and the hiss of steam regularly throughout the year.

Take a step back in time today with a visit to the Loxton Historical Village, where over 45 recreated buildings and exhibits are located on the banks of the Murray River to showcase the stories of the region's early settlers and their families.

Throughout the region, you will discover a fascinating series of locks and weirs that were installed along the River Murray in the 1920s initially to aide navigation. In latter times the locks and weirs were used to divert water to the emerging agricultural industry and surrounding areas.

There are six locks in the Riverland between Blanchetown (Lock 1) and Murtho (Lock 6). You'll find interpretative information at Locks 1-5, along with the barge 'Bunyip' located at Lock 5. Locks 2, 4 and 5 also have free BBQ and picnic areas and if you're lucky, you may even see a boat pass through the lock chamber.

By simply crossing the river, you will be stepping back to a history brought to life. Ferries were used to cross the river as early as the late 1800s. There are four cable ferry crossings, each named after a native bird species that operate 24 hours and are free to use.



PARINGA BRIDGE

At the time it was opened in 1927, the Paringa Bridge was one of the most significant early steel bridges in South Australia. Originally designed for road and rail traffic, the historic lift span bridge and associated railway have played an important role in local communications, especially during times of flood.

The rail section of the bridge has been converted into a pedestrian walkway, with the lift span still operating each day at 9.30am and 2.30pm when boats need to pass.

MURRAY PRINCESS

JOIN A 3, 4 OR 7 NIGHT ESCAPE

INDULGE YOURSELF ON ONE OF OUR UNFORGETTABLE CRUISES ALONG THE BEAUTIFUL MURRAY RIVER. BOOK 90 DAYS IN ADVANCE FOR EARLY BOOKINGS SAVER FARES!

CHEERS TO A SPECIAL EVENT CRUISE

FROM SPECIAL JOURNEYS AND HOLIDAY CELEBRATIONS TO ENTERTAINING MUSIC NIGHTS, OUR EVENT CRUISES ARE NOT TO BE MISSED! BOOK EARLY TO AVOID DISAPPOINTMENT.

LINGER LONGER IN STUNNING SA

COMBINE YOUR MURRAY PRINCESS CRUISE WITH A TRIP TO KANGAROO ISLAND, A STAY IN ADELAIDE AND EVEN THE FLINDERS RANGES WITH OUR HOLIDAY PACKAGES.



CALL 1300 729 938 OR VISIT [MURRAYPRINCESS.COM.AU](https://www.murrayprincess.com.au)

For information, cruise dates and pricing, please see our website.

RIVERLAND

SOUTH AUSTRALIA

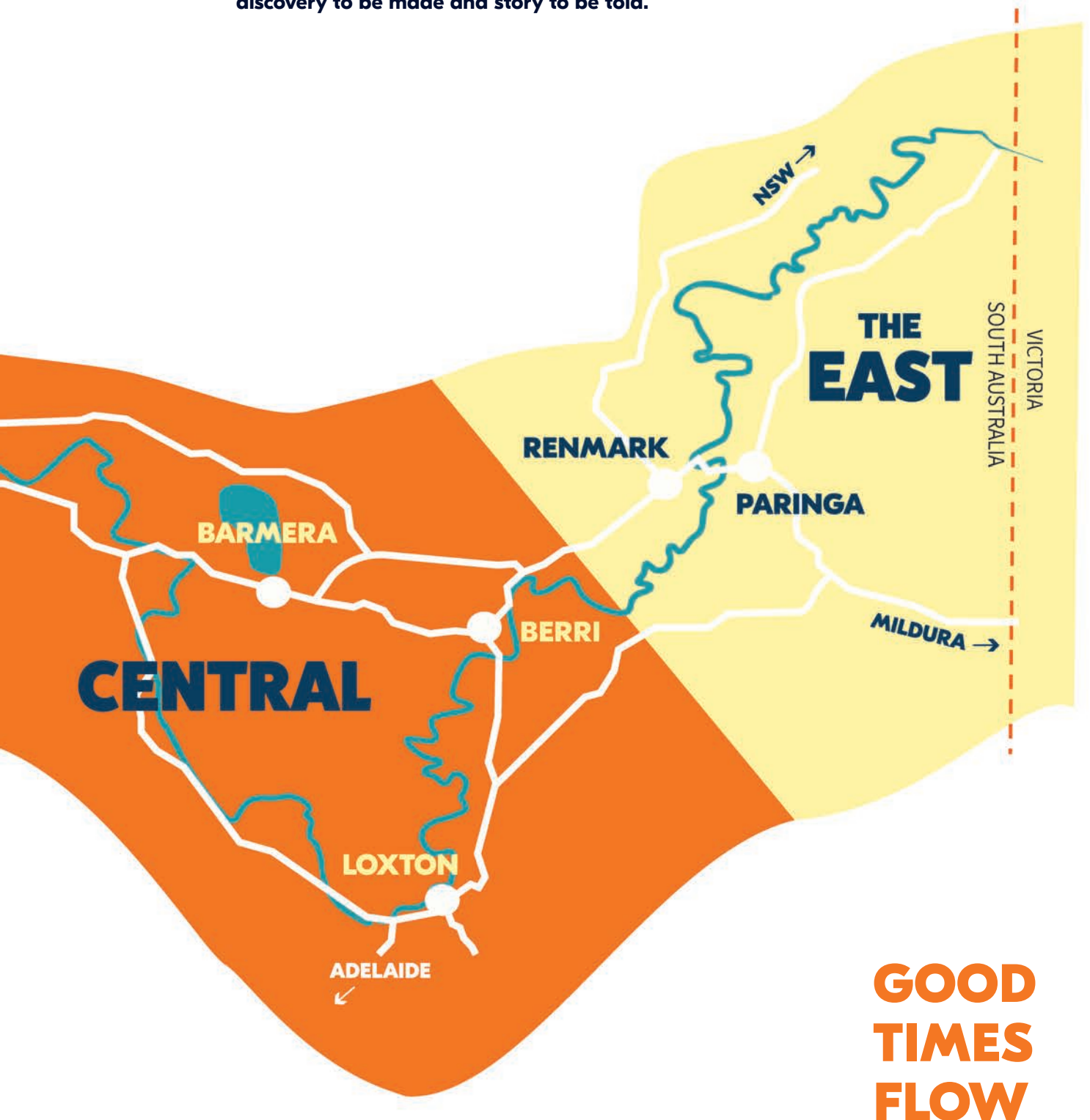


Scan
to find out more



The Riverland is a place where nature overawes in the most extraordinary ways, where you can treat yourself to a haven of flavours and immerse yourself in its natural indulgence. It's a place where no matter what your idea of fun, there's plenty to see and do.

The Riverland is one big storybook where the facts are often larger than fiction. This is a place with twists and turns that extend beyond the river itself. At every corner along the road, every river township you enter, every trail you venture and every creek you paddle, there's a new discovery to be made and story to be told.



The West

Welcome to the Western Gateway to the Riverland.

With rugged, unspoiled landscapes, big skies, and some of the best stretches of river, the western end of the Riverland offers a natural paradise just waiting for you to explore.



Renowned for dramatic cliff faces, preserved wetlands and a number of ecologically significant national parks, The West is teaming with opportunities to get back to nature. For bird watching, Gluepot Reserve has more than 200 recorded bird species, while the Cadell Wetlands walk offers opportunities for twitchers to catch a glimpse of local waterbirds. Brookfield Conservation Park at Blanchetown has several self-guided walks with

the chance to see the endangered southern hairy-nosed wombats — early morning walks give the best wombat-spotting opportunities.

If star gazing is to your liking, you're in luck. Bring your binoculars or telescope, or kick back among one of the region's many free camping spots and enjoy unparalleled views of the Milky Way.

Here, you'll find some of the quieter stretches of river, perfect for swimming and water skiing

and everything in between.

The Waikerie Water and Nature Play Park is the perfect spot for littlies to explore water in a safe environment, with public barbeques and undercover picnic tables to complete your riverside experience.

From wine tasting and cellar door experiences, to discovering the rich pioneer history and the majestic wilds of the great outdoors, choose your own adventure. Just make sure you book enough time here to soak it all in.



Caudo Vineyard



The West



Roonka Riverfront Homestead and Cottages

The perfect location for a family holiday

Roonka Homestead offers 4 large bedrooms 2 bathrooms, sleeping up to 16. There is an inside and outdoor kitchen and huge verandah overlooking the river only 40 metres away. Enjoy large open lawns along the riverbank. There is also a boat ramp, swimming/ski area and spot for a camp fire.

Murraylands Road, Blanchetown

P 0418 849 054

E roonka@adam.com.au

www.roonkahomestead.com.au



Burk Salter Boutique Winery

Producers of award-winning wines

Take the time to sample the award-winning boutique wines, in the relaxed atmosphere at Burk Salter overlooking the family vineyards and River Murray. This award-winning winery also offers B&B accommodation, and wine and wetland tours. Open Saturday – Sunday and public holidays from 11am – 4.30pm.

72 Paisley Road, Blanchetown

P (08) 8540 5023

E admin@burksalterwines.com.au

www.burksalterwines.com.au



Griffens Marina Blanchetown

Making your houseboat holiday unforgettable

Our private marina is located exclusively on one of the most picturesque and uncrowded river stretches along the Murray River, just 90 minutes from Adelaide. From affordable to deluxe, 2-12 berth, get ready to enjoy an extra special houseboat holiday experience!

9131 Sturt Highway, Blanchetown

P (08) 8540 5250

E info@griffensmarina.com.au

www.griffensmarina.com.au



AT A GLANCE

- The huge artworks on the Waikerie Silos depict the region's relationship with the natural environment - a must see for all visitors.
- Follow the steps of the region's pioneers along the Waikerie Rotary Clifftop Walk from the town centre and be rewarded with some of the most breathtaking riverscapes on offer.
- Eat like a local at the various cellar doors, pubs/clubs and cafes or stop off at Nippy's factory outlet to stock up on the region's best fruit juices.
- Enjoy a local guided river cruise with Rivergum Cruises to find out more about the local ecology and history while indulging in a glass of wine and local grazing platter.
- Check into the Rotary Waikerie Riverfront Markets held on the fourth Sunday of each month with arts, crafts, jewellery and fresh produce on offer.



WAIKERIE

Welcome to Waikerie — the hub of the West of the Riverland. This dramatic stretch of the river boasts breathtaking scenery — rugged cliff top river views, peaceful wetlands and spectacular national parks.

With truly stunning views, exploring the local landscape is a must when visiting Waikerie. There are several self-guided walks and walking trails, including the Waikerie Rotary Clifftop Walk, that follows the trail of the pioneering settlers who walked between Waikerie and the local settlement of Holder.

Check out Waikerie's dynamic art scene

with a visit to the stunning Silo Art, visit the local Rain Moth Gallery run by a group of enthusiastic volunteers, or take yourself on a self-guided walking tour of the emerging Waikerie Street Art Murals. Just out of town, you can arrange to visit Riverglen View Art Studio.

You'll find a nod to Waikerie's produce wherever you go. Local providore Illalangi Gourmet Foods offers a curated range of gourmet treats gathered from a wide array of the region's growers as well as their own handmade products. The local Nippy's factory showcases Waikerie's citrus scene and offers factory direct sales for visitors.



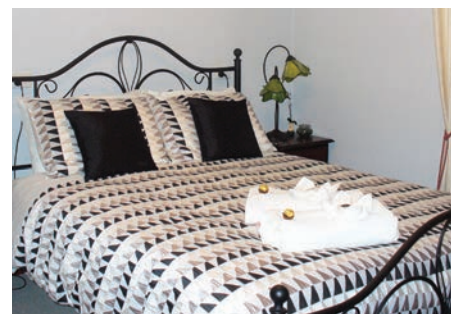
Green and Gold Houseboats

Experience the outstanding views the Murray has to offer

Start your Riverland houseboat holiday at Waikerie — a two-hour drive from Adelaide or Mildura — with Green and Gold Houseboats. We have been locally owned and operated for 30 years. With a diverse range of scenery — riverbanks and cliffs to conservation parks — there is so much to explore on this peaceful

stretch of the river between Morgan and Moorook, and no need to travel through a lock. We offer an affordable getaway for family and friend groups, with canoes and paddleboards available to hire also. Check houseboat availability online and start planning.

P (08) 8541 2001
www.greenandgoldhouseboats.com.au



Salter's Station

The ideal vista to awaken to

Built in the 1950's, this Mobil Service Station has been lovingly renovated as a two bedroom, fully self-contained holiday home to accommodate 4 guests. All linen included, reverse cycle air conditioning, fully equipped kitchen and more to make your stay comfortable. Complimentary bottle of Burk Salter wine on arrival. Dogs welcome.

72 Paisley Road, Blanchetown
 P (08) 8540 5023 or 0438 405 023
 E janesalt@activ8.net.au
www.airbnb.com.au





ENJOY THE BEST VIEWS *In the Riverland*

AT VIEWPOINT CAFE & SERVICE STATION



NEW EXTENDED MENU



LOCAL PRODUCE



PRIVATE FUNCTIONS AND CATERING
enquire in store

Viewpoint Cafe is Waikerie's number one cafe destination and offers a full sit down and take away menu as well as a full bakery range, fresh rolls, croissants and all-day breakfasts. We make delicious Vittoria coffee and have a great range of Loxton bakery sweets, home-made cakes, slices and buns.

NEW OPENING HOURS MON - SUN: 6AM - 10PM

(08) 8541 2444

12905 STURT HIGHWAY, WAIKERIE



FOR UPDATES AND EVENTS





Waikerie

BLANCHETOWN

Located just an hour and a half from Adelaide, the clifftop town of Blanchetown is the perfect base for those looking to experience uncrowded stretches of calm water. Local operators hire out houseboats, shacks and riverfront homes, providing ample opportunity to explore local cliff-framed riverscapes. On the western side of the river, the Brookfield Conservation Park has a number of self-guided walks including the old Charcoal Pits, while the Three Habitat Walk provides the opportunity to spot the endangered southern hairy-nosed wombats. The Blanchetown Hotel provides a stunning view, with dining available on the deck overlooking Lock 1. Burk Salter Boutique Winery offers cellar door tastings and a unique wine and wetland tour aboard a restored 1927 Chevrolet truck.

CADELL

Featuring a natural limestone amphitheatre, stunning riverscapes and open wetlands, the town of Cadell is abundant with natural wonders. Two easy walking trails give visitors a tour of the Cadell Wetlands with the opportunity to spot local birds including the Black Swan, Red-Necked Avocet and the Eurasian Coot.

The Murray River Scenic Trail tells the story of the town's history as a soldier settlement community and includes a visit to the old pumping station chimney. The Cadell Interpretative Centre houses displays about the town's history and native environment and is (conveniently) also the cellar door for local winery Spook Hill Wines. For more wine tasting, head to Caudo Vineyard where dining options feature local wood-fired pizzas and a stunning view of Hogwash Bend.

MORGAN

Once the busiest inland port on the Murray, the town of Morgan has a rich history dating back to the 1870s, with much of the original infrastructure still intact today.

Morgan's Visitor Information Centre, in the old Station Master's House, is a great first stop for those looking to step back in time, as is the Old Wharf Craft Shop located in the old ticket office, and the heritage-listed Morgan wharf.

The wharf is the home of PS Canally — a side-wheeled paddle steamer built in 1907, which has undergone extensive restoration to return her to her former glory. Morgan's self-guided heritage walk is a great way to extend your historical tour of the town, with a visit to the Landseer Building a must.

There are two pubs that over look the riverfront for food and beverage options.

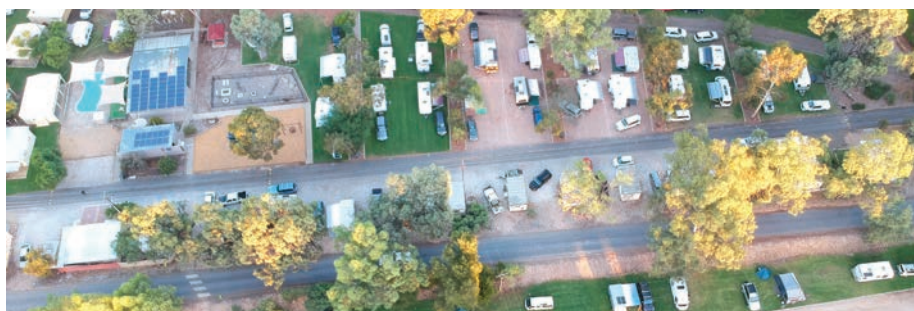


BIG4 Blanchetown Riverside Holiday Park

Tranquility by the riverside

Peaceful, quiet and tranquil are appropriate descriptions of BIG4 Blanchetown Riverside Holiday Park, set in a large lawned area right on the edge of the mighty River Murray. 4 night special - 2 persons - powered site **\$99** or ensuite cabin **\$299**, available most of the year, conditions apply.

Sanders Street, Blanchetown
P (08) 8540 5070
E enquiries@blanchetownriverside.com.au
www.blanchetownriverside.com.au



Morgan Riverside Caravan Park

The ideal destination for all holiday makers

Offering on-site accommodation for you to choose renovated ensuite cabins, basic pet friendly cabins, selected drive through sites, large grassed and crusher dust powered sites and water front unpowered sites. The Morgan Riverside Caravan Park also has its own swimming pool, playground and mini golf **92 South West Terrace, Morgan**
P (08) 8540 2207
E info@morganriversidecaravanpark.com.au
www.morganriversidecaravanpark.com.au

for guests to enjoy. Including a camp kitchen, laundry, barbeques, dog wash and boat ramp. You can even hire kayaks, canoe, ski gear or stand up paddle boards. Ideal for those interested in exploring Morgan, the River Murray and surrounding wine regions. This caravan park is the perfect destination for your next escape no matter how short or long!





Rivergreen View Art Studio

Home of Frankel Glass and Books

With river views as stunning as the artworks, a visit to this unique and private gallery is a must. Affordable, locally made, original gift items. Not far from Riverland towns, yet tucked away in an incredibly private and remote setting. Take a short stroll to a breathtaking cliff-top lookout. Open daily by appointment. Phone Liz.

Nitschke Road, Good Hope Landing
P (08) 8589 3123
E art@frankelglassandbooks.com.au
www.frankelglassandbooks.com.au



Waikerie Holiday Park

Experience a newly built park!

Relax and enjoy your holiday in a NEW, open, levelled and bitumised park across from the Murray River at Waikerie Holiday Park. With cabins, grassed and matted sites, you'll find we're designed to get you set up and exploring sooner. It's a no fuss holiday with something for everyone!

44 Peake Terrace, Waikerie, South Australia
P (08) 8541 2651
E stay@waikerieholidaypark.com.au
www.waikerieholidaypark.com.au



Morgan Colonial Motel

Be surprised by the Morgan Colonial Motel

Quiet, quality and affordable accommodation close to the highway and just a five-minute walk to the beautiful River Murray. Choose from an executive or standard room, each with an ensuite bathroom, aircon, microwave, kettle, toaster, coffee/tea facilities, Wi-Fi & more. It's the small things that count!

1 Federal Street, Morgan
P (08) 8540 2277
www.morganmotel.com.au



RIVER HISTORY, MAJESTIC SCENERY
AND THE BRIGHTEST NIGHT SKIES
WILL EMBRACE YOU IN BLANCHETOWN,
MORGAN AND CADELL

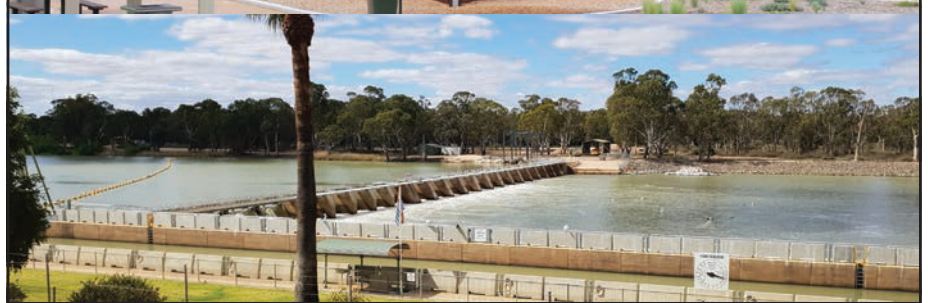
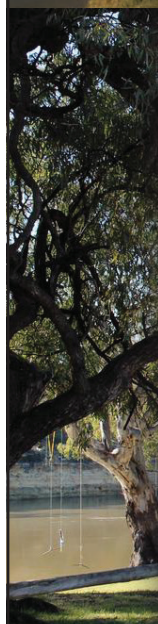
FOR MORE INFO:

Morgan Visitor Information Office – 8540 2643

mid-murray.sa.gov.au

visitmorgan.com.au | cadell.org.au

@visitmorgan @midmurraycouncil



Riverland South Australia



0 3 6 9 12 15
kilometres



Visitor Information Centre

Lookout

Boat Ramp

Camping

Toilet

Picnic Area

Golf Course





Loxton Pioneer Playground

Riverland favourite for kids of all ages

The playground features free barbecue facilities, grassed areas, toilets, sheltered seating, and is within short walking distance to cafes and dining. The impressive PS Jolly Miller climbing structure, features two slides while the Neos electronic game, double flying fox, bike/scooter track and wheelchair accessible carousel are also highlights.

**Kokoda Terrace and
Tobruk Terrace, Loxton**
P (08) 8584 8071
www.visitloxton.com.au



919 Wines

Purity - Integrity - Sustainability

Savour a range of award-winning sparkling, table and fortified wines at this iconic family-owned winery. Cellar door open from Wednesday - Sunday 10am to 5pm, plus public holidays or by appointment.

39 Hodges Road, Glossop
P 0408 855 272
919wines.com.au



Barmera Club

An ideal family friendly venue

Lunch and dinner are served at the recently renovated Barmera Club from Tuesday - Sunday. Spectacular lake views! Lunch served Friday - Sunday. Dinner served Wednesday - Sunday.

149 Dean Drive, Barmera
P (08) 8588 2025
E info@barmeraclub.com.au
barmeraclub.com.au



Historic Overland Corner Hotel



Central

Central

**The beating heart of the Riverland awaits.
From gentle backwater creeks, bustling country markets
and a busy calendar of live events, exploring the central part
of the Riverland will fill the senses and delight the soul.**



With a concentration of charming towns and localities, the central region of the Riverland offers a rich and diverse experience for visitors. The tiny town of Overland Corner is famed for its award-winning and historically significant pub, while Berri and Barmera offer family-friendly experiences and buckets of opportunities to

explore the local waters. Browse the cafes and shops at Loxton, before heading to the Loxton Historical Village.

Be inspired by the great outdoors, including the natural beauty of the Murray River National Park and its great network of wetlands, walking trails and camping sites. There's also amazing stretches of river, the gentle beaches of Lake Bonney

and the backwaters of Nockburra and Chambers Creek to explore.

If all that works up an appetite, local pubs, clubs, restaurants, and cafes will refresh and refuel you with plenty of locally grown produce making its way onto your plate or into your glass. Roadside produce stalls are iconic in this part of the Riverland, so stock up on fresh fruits and vegetables to enjoy while you stay.

AT A GLANCE

- Take a break on the lake! Lake Bonney is a haven for jet skiing, swimming, paddle boarding, canoeing, kayaking and fishing.
- Explore Berri on foot with a lap around Martin Bend Wetland and Walking Trail, or head to the Wilabalangaloo Nature Trail for a contrasting perspective.
- Explore the Loxton History Boards, Loxton Historical Village and a tour of The Pines.



Loxton Historical Village

LOXTON

Rich with pioneer history, the vibrant town of Loxton packs a big punch, offering local cellar door and dining experiences, along with easy access to the mighty Murray River.

Loxton's main street is a buzz of activity with local shops offering an eclectic range of homewares, and fashion. The new Precinct sporting and event centre overlooking the main oval is a great place to host events.

Explore the self-guided Loxton Heritage Walk or take a step back in time at the Loxton Historical Village. A visit to The Pines is a must. Once the home of the pioneering Kingdon family, this grand sandstone villa is now lovingly maintained by local volunteers.

As a riverside town, water sports of all kinds are encouraged. You'll find this part of the world popular with paddlers, swimmers, kayakers and boaties. Fishing and yabbing are also favourite local past times, with equipment and supplies readily available.

Loxton also holds several events each year including the Loxton Mardi Gras, Nippy's Loxton Gift Carnival, Uni SA Pedal Prix, and the Loxton Show. A family-friendly favourite is Loxton Lights Festival — a month long Christmas festival — where the whole town lights up with Christmas displays.

BARMERA

Located in the heart of the Riverland, the beautiful town of Barmera is famed for its laidback lifestyle and stunning sunsets. Barmera is the perfect base for those wishing to explore the sites of the Riverland. With Lake Bonney on your doorstep, the thrills never end. Jet skiing, wind surfing, paddle boarding, yachting, kayaking and tubing are popular pursuits, while gentle lake beaches provide endless fun for children.

Visit the Loveday Internment Collection at the Visitor Information Centre — a must for history buffs. While you're there, ask staff to point you in the direction of Rocky's Hall of Fame and the Pioneer Museum — both located in the old fire station — or grab a map of the Explore Barmera Walk and take a self-guided stroll around the town's landmarks.

A short drive away, you'll find the ruins at Napper's Bridge — remnants of the original Lake Bonney Hotel.

For lakefront accommodation, the caravan park offers flexible options with onsite activities for small people including a bouncing pillow and water park. There are also several motels, holiday homes and serviced apartments, providing the ideal base for golfers keen to hit the Barmera greens.

BERRI

Modern, cosmopolitan Berri is one of the bigger towns in the Riverland. Centrally located, this riverside gem is an ideal holiday base offering gorgeous river experiences, great shopping and dining.

Berri's riverside precinct is well worth exploring with the Visitor Information Centre an ideal first stop. Riverside dining options include River Jacks Cafe and the Berri Hotel and the lawned areas are ideal for a picnic while the kids enjoy the playground. Take in the Berri Riverfront Walk and the Art and Cultural Walk.

Beginning at the Berri Marina, the Martin Bend Wetland and Walking Trail allows visitors to appreciate the unique ecosystems of the riverbank on foot. Head further afield to the wonderfully named Wilabalangaloo Nature Trail for a self-guided tour of the local Mallee habitat and glorious cliffs.

The river itself provides ample opportunities for high-paced water pursuits as well as laid back options with fantastic canoe and kayak tours on offer and even a row with the local rowing club. Berri is on the doorstep of the wonderful Murray River National Park Katarapko, providing fabulous camping and day trip opportunities.

Big River Golf and Country Club in Berri offers not only a fabulous 18-hole course but a great dining experience.



Riverline Cottage

Rustic, charming and fully self-contained

Enjoy the serenity and the seclusion of this gorgeous replica stone cottage set in stunning private gardens. Perfectly suited to an indulgent weekend away in the Riverland. Relax, recharge and unwind with a complimentary cheese platter and wine on arrival. Generous breakfast provisions and bicycles to explore the local area at your leisure.

141 Karoonda Highway, Loxton
P 0414 922 269
Bookings - www.riverlinecottage.com.au



BIG4 Loxton Riverfront Holiday Park

A peaceful park with the river a stones throw away!

Located a short 4 minute drive from the town centre this is your perfect long or short stay destination. The park offers well appointed Executive Cabins with river views from the verandas, plus a selection of

Standard Cabins, shady grassed sites, modern amenities, mobility friendly bathroom, camp kitchen and BBQs making this the perfect park to base your Riverland discovery.

Sophie Edington Drive, Loxton
P (08) 8584 7862
www.loxtonholidaypark.com.au



Berri Newsagency

The one-stop gift shop

As well as newsagency staples, this shop stocks a great range of giftware and leather goods. Keep the kids entertained with books, games and activities, or grab the winning lotto ticket! Gamble Responsibly 1800 858 858.

2a Vaughan Court, Berri
P (08) 8582 1049
E shop@berrinewsagency.com.au
berri.newspower.com.au



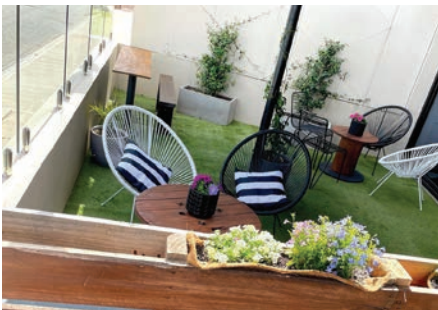
Riverbush Holiday Cottages

Four fully self-contained holiday cottages

The perfect holiday spot in the Riverland, or the ideal location to base yourself from for work related stays in the region. Spring Cart Gully, where the river meets the natural bushland. Located on 37 acres of private, riverside land - 5 minutes from Berri, 10 minutes from Renmark and 2.5hrs NE of Adelaide.

Each cottage can accommodate six people, with undercover parking for two vehicles. Outside are gas barbecues and a large playground for the kids. Walking trails to the River just 400m from the cottages with access to our private, lawned riverfront grounds with a boat ramp suited to smaller vessels (also accessible by road). Book now via the website listed below. We look forward to welcoming you to the property on your next trip to the Riverland.

1618 Old Sturt Highway, Berri (Opposite the Big Orange)
E stay@riverbush.com.au
www.riverbush.com.au



The Lakes Cafe & Bakery

Serving cooked meals all day, along with coffee and snacks and a great range of fresh daily bakery and pastry goods. Weekly specials, takeaway options, gluten free alternatives, indoor and outdoor dining and a wonderful view of Lake Bonney make this spot one to try on your next trip to the Riverland. The Lakes Cafe & Bakery is open Mon-Fri 7.30am - 3pm and Sat 8.30am-2.30pm/Sun 9am-2.30pm.

1 Dean Dr, Barmera
P (08) 8588 2000
E sunbake@riverland.net.au



The Overland Corner Hotel

A venue with plenty of charm

There's so much to see and do at the iconic Overland Corner Hotel. Enjoy a pint of Overland Corner Gold in the Riverland's largest beer garden, with lunch available from 12pm. Take a guided tour and learn more about the ghoulish

history of Overland Corner. Free camping on site, tours by appointment. Open Tuesday - Sunday 11am - 6pm, open late for dinner Friday and Saturday nights, bookings essential.

Old Coach Road, Overland Corner
P (08) 7552 5660
E info@overlandcornerhotel.com.au
ochotel.com.au



CHOOSE ROLY'S AUTOMOTIVE SERVICES FOR RELIABLE CAR AND CARAVAN SERVING WHILE ON THE ROAD.



Services

Caravan & vehicle pre trip inspections
Caravan wheel alignment & caravan servicing
Clearview towing mirrors
Servicing all vehicle makes and models
Auto electrical repairs
Pedders suspension Pedders GVM upgrades
Hayman reese towing solutions
4WD lift kit components
Caravan & commercial vehicle weighing facilities

(08) 8582 2667 | admin@rolysauto.com.au
27 Jellett Road, Berri, SA 5343

AL-KO



Authorised
Dealer



Central



KINGSTON-ON-MURRAY

Peaceful Kingston-on-Murray is uniquely positioned on the junction of the river and a group of natural wetlands, making it a place of spectacular beauty and biodiversity. To get the best sense of the area, a trip to Banrock Station Wine and Wetland Centre is essential. View the wetlands, explore their self-guided walks or join a ranger for a more bespoke experience. Back at the cellar door, wine tasting and lunch overlooking the wetlands presents the best way to refuel.

For those looking to canoe or kayak, Kingston-on-Murray provides the best access to local backwaters including Nockburra and Chambers Creek. Nature lovers get exclusive access to the river at the local caravan park, a popular spot for those looking to be inspired and refreshed by the local landscapes.

COBDOGLA

Just a short drive from Barmera, the town of Cobdogla is a great destination for those looking to escape the crowds. Locals love the boat ramp at Bruno Bay — the ideal launching spot for fishing and boating or exploring the backwaters to the north. The local community club offers laid back meals and country hospitality, with frequent events including live music.

The Cobdogla Irrigation & Steam Museum is popular with historians and families alike. Housing one of the only working Humphrey Pumps in the world, the museum tells the story of the development of the local irrigation district. Museum open days are a must for those travelling with kids — with so much to see and do, including a ride on the steam train!



MONASH

Renowned for one of the most impressive and iconic children's playgrounds, a trip to Monash is a must for visiting families. Monash Adventure Playground offers extensive obstacles and challenges to keep small people entertained including the leaning towers, tricky rope bridge and giant wooden maze. Onsite facilities include undercover picnic tables and free barbecues. And, with a local butcher and general store, picking up supplies for lunch is easy. Also in Monash is a local club and the unique Mallee Fowl Restaurant. Set amongst picturesque bushland and resembling an early settlement dwelling, they also have many different native animals on site. The walls inside are adorned with a fascinating collection of historical paraphernalia and the menu is equally eclectic with a range of local beverage options.

LOVEDAY

Flanked between wetlands and blocks of vines, Loveday is perhaps most renowned for the internment camp that held immigrants during the second world war.

Much of this history is on display at the Barmera Visitor Information Centre and is well worth viewing, while some of the camps original buildings are still visible for those keen to explore.

The popular Loveday 4x4 Adventure Park offers four wheel drive enthusiasts with the opportunity to get off the beaten track, and includes campsites, its own pub and a children's playground.

They also offer guided jet ski tours of the local backwaters, providing the ultimate experience for petrol heads and thrill seekers.

GLOSSOP

Centrally located between Berri and Barmera, the road to Glossop is flagged with roadside produce stalls – a sight unique to the Riverland. Stop off to stock up on locally grown fruit and vegetables and check out the range of handmade goodies also on offer. Glossop is home to Berri Estates, the largest winery in the Southern Hemisphere, with a comprehensive cellar door.

For a more intimate wine tasting experience, head to the award winning 919 Wines and sample their range of hand-crafted wines, including some exciting emerging varieties.

The town was named after Vice Admiral J.C. Glossop, Commander of HMAS Sydney that sank the German raider Emden during World War I. An anchor situated out the front of the town's motel is a memorial to this commander.



LYRUP

Gateway to the Murray River National Park, Lyrup provides an ideal base for those looking to explore long stretches of river floodplain.

The secluded and laid-back vibe attracts those interested in bird watching, fishing, boating and camping. For more creature comforts, local accommodation includes luxury self-contained villas and easy access to the Riverland Wine Centre.

The town itself has a general store, a community club and also shady spots along the riverbank areas for picnics. For a unique experience hop on the Lyrup ferry and don't forget to look out for what native bird it is named after. SS Ellen Park is a great spot to take your RV and also includes a playground.

OVERLAND CORNER

The epicentre of Overland Corner is the Historic Overland Corner Hotel, once the watering hole for drovers moving livestock across the country. Established in 1859, this heritage-listed hotel has retained many of the historic artefacts, acting as custodians of the local history. Today, the Historic Overland Corner Hotel is a vibrant country pub serving a range of locally sourced foods, wines and beer amid a stunning garden setting. To explore a little further afield, the National Trust's Overland Walking Trails allow visitors to learn about the ecology and history of the local landscapes. Ancient seabeds provide a hint of what the area looked like tens of thousands of years ago, while the original mines and cemetery depict the life and times of the town's European settlers.



Moorook Riverfront Reserve

MOOROOK

Campers rejoice with the options at Moorook, with riverside camping available in both the Moorook Game Reserve and beside the river adjacent to the general store. Wherever you set camp, the wetlands of Wachtel's and Yatco Lagoons are on your doorstep. Home to thousands of waterbirds, this unique ecosystem is well worth exploring. Bring your own supplies and dine alfresco, or head to the Moorook Club for pub-style fare. To stock up on local wines, head to Mundoo Ridge or Whistling Kite Wines at New Residence to try their ranges.

WINKIE

The town of Winkie provides access to the Katarapko section of the Murray River National Park, popular for day trips and longer visits at the park's 55 individual campsites. Visitors can explore the wilds of Katarapko along self-guided drive and walking trails while easy access to the wetlands lends itself to paddle boarding, camping, fishing, walking, birdwatching and canoeing. Katarapko Creek is an angler's friend and great for catching golden perch and yabbies. "The Kat" as it's known to locals also offers toilet facilities and boat ramps.



Banrock Station

Eco Star Winery

Banrock Station is an eco-haven in the South Australian Riverland region. Visit Banrock Station to immerse yourself in nature. Choose from a range of guided or self-guided tours of the wetlands, or just enjoy a wine tasting, breakfast or lunch on the deck overlooking magnificent

views of the vines and wetlands.

Banrock Station was named the joint winner of the Sustainable Wine Tourism Practices Award in the 2022 South Australia Awards for Best of Wine Tourism. Visit us to see why. A must-see destination for nature lovers and wine lovers alike.

Holmes Road, Kingston on Murray
P (08) 8583 0229
E bscd@banrockstation.com.au
banrockstation.com.au



Cobdogla Club

Family, friendly venue

This family friendly venue provides great value for money and something to keep the whole family fed and entertained! Meals are served from 6pm, Wednesday to Sunday with daily specials. Kids can choose from their own menu with free soft drink included and a dedicated children's playroom. Indoor dining, beer garden, pokies and Keno/TAB facilities.

Rowe Street, Cobdogla
P (08) 8588 7092
www.cobdoglaclub.com.au



Discovery Parks — Lake Bonney

A Waterfront Holiday in Nature's Playground

Perfect for families who love to adventure, pet-friendly Discovery Parks — Lake Bonney is a waterfront escape with something for everyone. Beautifully positioned by the water's edge, this park provides ultimate access for kayakers, skiers, and nature enthusiasts. Hiking trails offer tranquil views, while kids always love the popular waterpark and swimming pool.

Lakeside Drive, Barmera
P (08) 8588 2234
www.discoveryholidayparks.com.au

Air-conditioned cabins have all the comforts, with Queen size beds, walk-in showers, and private decks. If camping under the stars is more your style, set up your caravan, campervan or tent and be rewarded with uninterrupted views of Lake Bonney.



Our Little Gem B&B

Accommodation in the heart of Berri SA

Located in the heart of Berri, this charming self-contained B&B is full of character, delightfully relaxing with modern facilities. Comfortably sleeping 5, it's just a 200m walk to the river and a short stroll to local shops, cafes and the Berri Hotel.

28 Crawford Terrace, Berri
P 0408 812 504
ourlittlegembb.business.site





Monash Adventure Playground

Relive your childhood or make new memories!

Monash Adventure Playground has been renovated, but remains renowned for having tonnes of equipment to keep the family entertained. A giant maze, leaning towers and rope bridge are set in beautiful gardens with BBQ and picnic facilities. Open daily from 10am – 5pm, excluding Christmas and Boxing Day.

Madison Avenue, Monash
P (08) 8582 5511
www.berribarmera.sa.gov.au/monash



Rocky's Hall of Fame and Pioneer Museum

Two museums in one!

Find out about the history of both Australian country music and local pioneers. Rocky's features the 35-metre-long big guitar and more than 190 Hands of Fame while the Pioneer Museum showcases local history including Donald Campbell's K7 water speed record. Please check Facebook for current times and private viewing options. Entry is \$2 per person.

Barwell Avenue, Barmera
P (08) 8588 2289
E.berribarmera.sa.gov.au/hof



Barmera Playspace

A kid's paradise!

Overlooking Lake Bonney this "play space" has plenty of imaginative play equipment to keep the children (and adults) happy for hours on end. With BBQ's and shelters this is an ideal space for families to enjoy a day out. Walk across the road to beautiful Lake Bonney and cool off with a swim on a hot day - the wave free beach makes it ideal for children to play in.

Nookampka Terrace, Barmera
P (08) 8588 2289
E.barmeratourism.com.au



Gourmet Regional Food

Homemade and Wholesome

OPEN 5 DAYS

Thurs to Mon: 9am to 4pm

Open for dinner over the summer holidays



Whether you are a tourist meandering through our region, or a local yearning for something homemade and wholesome, **FLAVOURS of the RIVERLAND** home of Backyard Bread is the place to be for gourmet regional food.

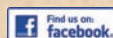
Catering and private functions available.

PHONE: (08) 8588 2159

**EAT
LOCAL**

Flavours of the Riverland

Sturt Highway, Barmera | flavoursoftheriverland.com.au



FOR UPDATES AND EVENTS





Barmera Main Street Markets

The award winning Barmera Main Street Markets cater for the whole family.

The markets comprise a large variety of stalls including clothing, craft, woodwork, jewellery, artwork, books, furniture, fruit, vegetables, homewares, dvd's, condiments, plants, food and coffee. From one market to the next there is usually some different stallholders mixed in with the regular favourites.

Barwell Ave, Barmera
P (08) 8588 2289
barmeratourism.com.au



Loveday Internment Collection

Loveday Internment Collection and Display

Learn about this unique part of regional wartime history with an audio visual display including original colour footage and a collection of memorabilia.

Barwell Avenue, Barmera
P (08) 8588 2289
E vic@barmeratourism.com.au
barmeratourism.com.au



River Jacks Cafe

Open for breakfast and lunch every day

On the banks of the mighty River Murray at Berri, a small café is making big waves with locals and foodies alike. River Jack's European-inspired dishes are made using fresh, locally sourced seasonal produce with fabulous coffee, alcoholic beverages, friendly service and a stunning view of the River. Serving fish and chips every day and Greek-style meals every Friday night.

340 Riverview Drive, Berri
P (08) 8582 4309
www.riverjacks.com.au



The River Block

Looking to escape?

Nestled on a property on the banks of a quiet lagoon you can put your feet up and pretend the world is all yours. Surrounded by a stone fruit orchard and wildlife, if you want to kayak, canoe, bush walk, fish or do nothing, then this might be the place you are looking for. Map provided upon request. We have made it simple, if you can **184 Nitschke Road, Bookpurnong**
P 0409 292 355
E hello@theriverblock.com.au
www.theriverblock.com.au

see it you can use it at the cottage. The property is located on 22 acres however the immediate homestead and Riverfront are where we would like you to limit your exploring by foot. We are only 5-10mins drive from the shops, so if you want to hideaway and live in your River Block bubble, stock up before arriving.

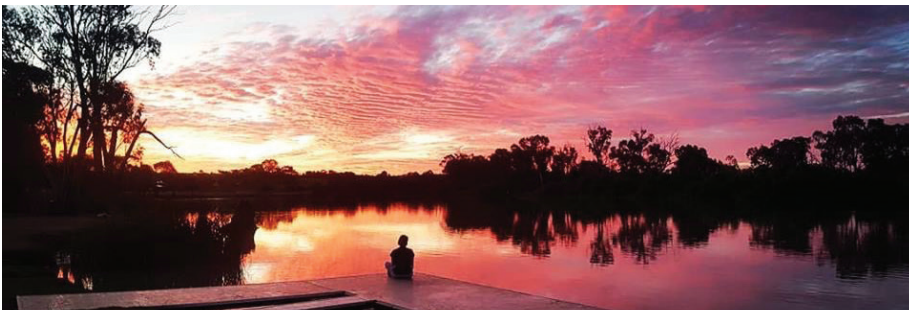


Cobdogla Station Caravan Park

The perfect place to spend time away!

You'll find a clean, quiet and friendly caravan park ideal for families. The park borders a lagoon, providing a stunning backdrop for picturesque photographic opportunities, bird watching, fishing and kayaking, especially at sunset. Relax in our country charm park and feel stress free and rejuvenated.

Shueard Road, Cobdogla
P (08) 8588 7164
E enquiry@cobdoglacaravanpark.com.au
cobdoglacaravanpark.com.au



Kingston-On-Murray Caravan Park

A hidden gem located in the heart of the Riverland

Located in one of Australia's bird watching megaspots, this hidden gem offers drive-through sites, budget and deluxe cabins, glamping and riverside camping with a pool, BBQ area, camp kitchen and more.

This pet-friendly park is centrally located in the heart of the Riverland, just 4kms from Banrock **461 Holmes Rd, Kingston-On-Murray**
P (08) 8583 0209
E info@komcaravanpark.com.au
www.komcaravanpark.com.au

Station and within easy access of Loch Luna's departure point. A favourite with those who want to enjoy family time, water sports or just simply relax and savour the scenery.



Hertz Riverland

Hertz Car Rental

Hertz Car Rental offers a fantastic range of well-maintained vehicles from compact hatches and sedans, SUV's, 4WD's. Explore the magic of the Riverland at your own leisure enjoying the freedom of your own car. Whatever the occasion, "We're here to get you there".

Renmark Auto Service — 40 Para St, Renmark
P 0448 533 884
McKays Auto Centre — 9 Francis Street, Waikerie
P (08) 8541 2288
E info@hertzmildura.com.au
hertz.com.au



Lion Allan Thurmer Recreational Trail

A short distance from the centre of Berri, this 2.8km loop of the local wetlands begins at the Berri marina and extends to Martin Bend. The trail includes five lagoons and a permanent connection to the river. An amble along this mainly flat loop takes about one hour, and is a great way to appreciate the local ecosystem and diversity of flora and fauna populations.

Start Berri Marina, Riverview Drive, Berri
P (08) 8582 5511
E tourism@bbc.sa.gov.au
berribarmara.sa.gov.au/trails



RV Friendly Berri Barmera

The perfect spot to meet new friends

Centrally located, Berri and Barmera are perfect for exploring the Riverland. With excellent caravan and camping facilities, both are RV friendly towns. Whether you want to pitch a tent and boil the billy in relative seclusion or join other campers in parks — there are plenty of opportunities.

Bruce Oval, Sims Street, Barmera
Martin Bend Drive, Berri
P (08) 8582 5511
www.berribarmara.sa.gov.au/rv



The Monash Club

If you're looking for a great value meal, then the Monash Club is calling you. The great menu features specials, kid's meals, schnitzel night (Wednesday), steak night (Thursday) and kids under 12 eat free Thursday nights with each adult meal. Open Wednesday to Saturday for dinner, lunches Friday, Saturday and Sunday. Breakfast every Sunday 10am to 12pm, coffee & cake available seven days. Big screen TVs, TAB, gaming available seven days.

16 Madison Avenue, Monash
P (08) 8648 6206
E admin@monashclub.com.au
facebook.com/themonashclub/



BERRI HOTEL

- > Accommodation
- > Bistro
- > Sportsbar
- > Gaming lounge
- > Bottle shop

(08) 8582 1411

31-37 Riverview Drv
Berri South Australia

info@berrihotel.com.au

[f/berrihotel](https://facebook.com/berrihotel)

berrihotel.com.au



BERRI HOTEL



THE TAVERN

- > Family-friendly Dining
- > Lounge Bar & Deck
- > Berri Golf Course
- > Accommodation
- > Gaming lounge

(08) 8582 2688

Shiell Road
Berri South Australia

info@bigrivergolf.com.au

[f/bigrivertavern](https://facebook.com/bigrivertavern)

bigrivergolf.com.au



Golf and Country Club



GAMBLE RESPONSIBLY



Arrosto Coffee

Firestation roastery and café

Check out Arrosto Coffee's cellar door café, located in the old Renmark Fire Station, which was originally built in 1959. Totally revamped and reopened in 2017, the space is used to showcase Arrosto's passion for coffee including

onsite roasting and a wide array of accessories for coffee lovers. Also offering cake, house-made chocolates and Riverland dried fruits with breakfast available on weekends until 12 noon. Open 7 days.

152, 18th Street, Renmark
E sales@arrostocoffee.com.au
www.arrostocoffee.com.au



Eleni's at Mallee Estate

A taste of Greece in the Riverland

Set amongst the sprawling vineyards of Riverland region of South Australia is a winery that was born from the romantic hearts of Peter and Eleni Markeas. Stop in for a tasting or a guided winery tour where you will follow the winemaking process from the vineyard to the bottle. Hosted by passionate second-generation winemaker Jim

20055 Renmark Ave, Renmark
P (08) 8595 1099
E admin@malleeestate.com.au
malleeestate.com.au

Markeas. Make a day of your visit and stay for lunch or dinner at the onsite restaurant Eleni's, where you can indulge in the best authentic Greek cuisine. Made lovingly from Eleni's family recipes passed down from generation to generation.



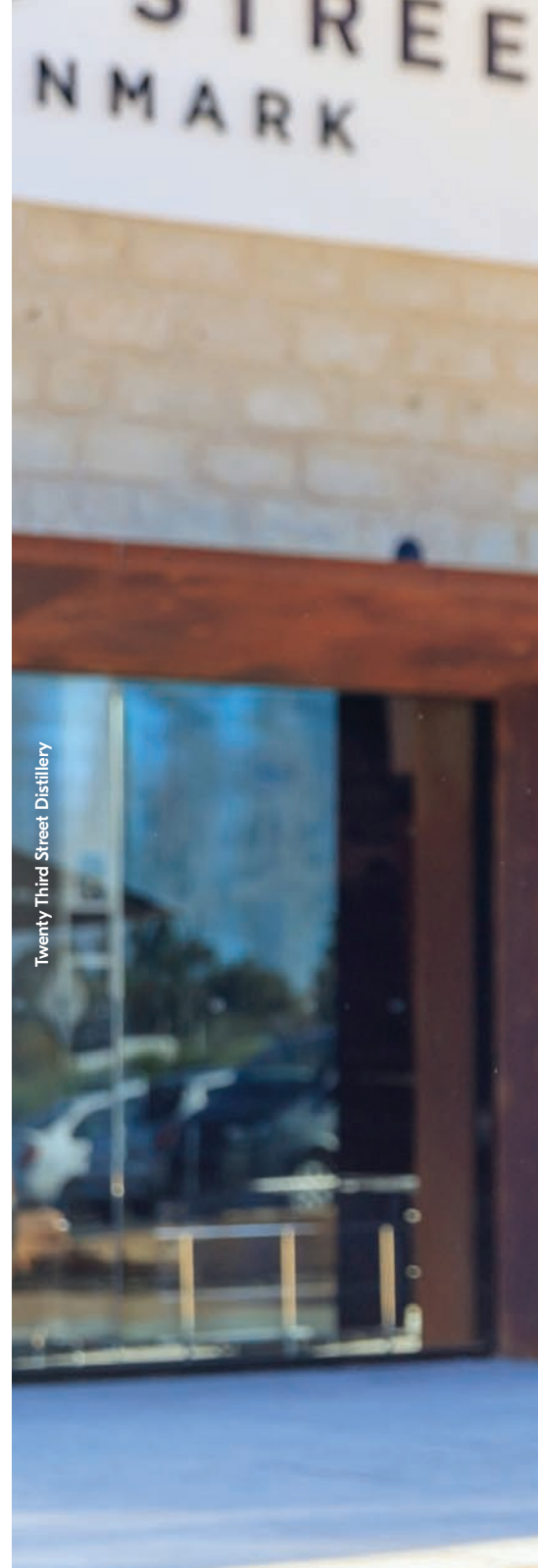
Templeton On Murray

Serenity at your doorstep

Templeton On Murray is the perfect destination to relax and unwind on your next holiday in the stunning Riverland. Family-owned and run, we want to make your holiday as easy and comfortable as possible. Six bedrooms and extra bedding provides room for up to 16 guests – the whole family can join in on the holiday fun.

17 Wilkinson Road, Murtho
E info@templetononmurray.com.au
www.templetononmurray.com.au

With sandbar access, barbecue facilities, an on-site fruit orchard, and trampoline and swing set for the kids, there is plenty to do. We are also the perfect venue to book for your wedding or event. Immerse yourself in the serenity of Templeton On Murray.



The East

Welcome to the East end of the Riverland.

Encompassing the towns of Renmark and Paringa, this vibrant hub provides so much to see and do. From family fun in the sun and wonderful walking trails, to boat cruises and fantastic food and beverage options, there's so much to discover around every corner.



The riverfront comes alive in Renmark! With heritage walks, shopping, river cruises and parks, there is something for everyone. Dining options are plentiful, both in town and on the outskirts, with a vast array of regional produce on the menus. The town of Paringa is a

short five-minute drive from Renmark and offers brilliant nature trails for walking and bike riding, along with the picturesque riverside Bert Dix Park

Grab a bite at the local pub or bakery in town. And to quench your thirst, you'll find Woolshed Brewery — a perfect backdrop for a slow afternoon of beer tasting

and river gazing. As for accommodation, the choices are endless. From luxury, self-contained suites in complete seclusion through to family-friendly caravan parks, RV parks, apartments and holiday homes.

With all that action, we guarantee a great night's sleep wherever you lay your head.



The East



Taylor Riverfront Precinct

RENMARK

Renmark lies on a sweeping river bend and has one of the most beautiful and accessible riverfronts on the river. With an abundance of wetlands and backwaters just upstream from the town, it's a gem just waiting for you to explore. Along the riverfront, a five-kilometre heritage walk is an ideal way to familiarise yourself with the town.

Renmark is home to an eclectic events scene, including the spectacular Illuminate to be held in June. It's also a popular destination for houseboat holiday seekers and RV travellers, seeking a diverse landscape and long stretches of river frontage.

The iconic Rustons Rose Garden is a must see for garden enthusiasts, featuring more than 4,000 species of roses, or take a trip down memory lane and visit the Paddle Steamer PS Industry, moored at the Renmark riverfront.

Renmark boasts distilleries producing spirits including gin and brandy, all with excellent cellar door experiences. In the town proper, diners can choose from pub and club options, cafes and restaurants with standouts including Arrosto Coffee in the old Renmark fire station. The popular, Twenty Third Street Distillery offers gin tastings, a contemporary food menu, gin blending and cocktail mixing masterclasses. Accommodation options are plenty including a plethora of houseboats for hire, group stays, holiday homes, and two riverfront caravan parks.

PARINGA

Named by the local traditional owners to mean "big bend in the river", Paringa lies between the Murray River and local backwaters. The town is marked by the Paringa Bridge — which can be raised and lowered to allow houseboats to pass. Bert Dix Park provides ample opportunities to fish and explore or enjoy the serenity of the riverbank or lawns overlooking Lock 5. The Paringa Paddock Trail is a network of walking and bike trails that will allow you to soak up nature's sights and sounds including river scenery and plenty of opportunities to spot local wildlife.

The town centre offers a pub, bakery and general store and accommodation options include houseboats, motel rooms, a caravan park and PS Julie Fay B&B, while the jewel in the crown is The Frames — super luxurious self-contained retreats with a myriad of bespoke experiences including sunset cruises and food safaris. After stopping at Heading's Cliff, the Woolshed Brewery is a popular venue for locals and visitors alike. Sample their range of craft drinks including beer, coffee stout and hard lemonade on the deck overlooking the river.

AT A GLANCE

- **Explore the riverfront precinct with a self-guided walk along the Matulick Riverfront Trail and enjoy a visit to the PS Industry near the Visitor Information Centre.**
- **The local shuttle bus service is a great way to enjoy a tour around the town's wineries and eateries.**
- **Unearth local history at Olivewood Estate, the home of the Chaffey family and now home to the Argo Barge.**
- **For something unique, head to one of the town's distilleries for a tour or tasting — even your own bespoke gin blending experience!**
- **Explore the region in all its glory during the Riverland Rose and Garden Festival. Held each October, local events include open gardens, art exhibitions, high teas, riverside markets and more.**



Woolshed Brewery

Spectacular view, an abundance of history, and a friendly, relaxed atmosphere

Located on a picturesque backwater of the Murray River, within the property's refurbished 100-year-old shearing shed, Wilkadene's Woolshed Brewery is a favourite amongst locals and tourists alike. Sit on our magnificent deck and sweeping lawns and soak in the beauty of the Murray River.

65 Wilkinson Road, Murtho
P (08) 8595 8188
E info@wilkadene.com.au
wilkadene.com.au

Independently owned and operated, Woolshed Brewery offer a variety of brews and Hard Lemonades. A spectacular view, an abundance of history, and a friendly, relaxed atmosphere make it the perfect spot to spend an hour, an afternoon or even a week exploring this stunning part of the Murray River.

GOOD TIMES FLOW





Ashley's Restaurant

Award-winning Ashley's Restaurant is located in the heart of Renmark, serving excellent Australian fare, specialising in steak and seafood. A favourite with Riverland locals, Ashley's offers a quiet, laid-back environment, perfect for families and small groups. The restaurant is fully licenced or BYO. Ashley's caters for functions of up to 40 people.

210 Renmark Avenue, Renmark
P (08) 8586 6854
E info@citrusvalleymotel.com.au
citrusvalleymotel.com.au



Riverbend Caravan Park, Renmark

A Traditional Holiday with an Iconic Backdrop!

Experience bush camping in the iconic backdrop of Australian getaways at Riverbend Caravan Park, Renmark. Situated right on the banks of the Murray River, you'll find yourself in a picturesque park where you can sit back and take in the natural beauty, wild life and sounds of a traditional park holiday.

101 Sturt Highway, Renmark, South Australia
P (08) 8595 5131
E stay@riverbendrenmark.com.au
www.riverbendrenmark.com.au



ABSOLUTE, WATERFRONT DINING

The Renmark Club offers four exclusive dining areas, providing a wide range of catering, from casual bistro to formal restaurant for dinner parties. Diners may relax inside or on the outdoor decking, enjoying a coffee and cake or their favourite drink.

The Cafe A-La-Carte menu has starters, traditional favourites, and selection of mains, and light lunch options starting from \$12.



BREAKFAST EVERY DAY FROM 9AM - 11AM
LUNCH 12 NOON - 2.30PM | DINNER 6PM - 8.30PM
ALL DAY DINING AVAILABLE

Murray Avenue, Renmark | 8586 6611 | www.renmarkclub.com.au



Come and chat with a passionate local at the

Renmark Paringa Visitor Information Centre

- Cruise, Tour & Accommodation bookings
- Extensive Local Produce & Souvenir range
- Local, Riverland, SA & Interstate information
- Historical display & PS Industry access

Renmark Riverfront, 84 Murray Avenue, Renmark
1300 661 704

Monday to Friday 9am - 5pm
Weekends and Public Holidays 10am - 2pm

  **#seeyouinrenmark**



Discover more about Renmark
Paringa on our website
www.discoverrenmark.com.au



RIVERSIDE *Estate* RENMARK



“You enter those village gates as a stranger, then end up with a whole community of friends and a lifestyle like no other!”

**Come visit us at
Riverside Estate Renmark!**

Life Begins at Riverside!

Riverside Estate is an over 55's lifestyle village and we welcome all to come in and see what we have to offer. Walk among our beautiful gardens, join the residents in one of the many activities or see our quality built homes. You can head to the information booth located at the Recreation Centre to pick up an information pack, or contact the friendly staff to discuss the benefits of living at Riverside Estate. We can even arrange for you to stay as a guest in the Hospitality House, where you can experience the fantastic lifestyle we have to offer.

To start living the Riverside life contact us today!

f RiversideEstateRenmark | 1800 031 588 | lifestyle@riversideestaterenmark.com.au
Murray Dyer Avenue, Renmark SA 5341



Renmark River Cruises

Riverland Boat Hire

Want to cruise the river at your own pace, or be guided along the mighty Murray? Riverland Boat Hire and Renmark River Cruises are your go-to. Riverland Boat Hire offer craft options to suit any boating need, while Renmark River Cruises offer a range of tours to relax and enjoy.

145 Murray Ave, Renmark
P 0400 760 386
www.riverlandboathire.com.au
www.renmarkrivercruises.com.au



Renmark Holiday Apartments

10 stylish apartments

Six one bedroom downstairs. Four two bedroom upstairs. Located in the CBD, opposite the Renmark Club.

Murray Avenue, Renmark
P 1300 855 563
E enquiry@renmarkholidayapartments.com
renmarkholidayapartments.com.au



COME VISIT US

Almondco is a name synonymous with premium quality and service in the international almond industry. With more than 60 different almond products available in-store there is something for everyone. Buy online or call in and see our friendly staff today.



OPEN Monday-Thursday 8.30am-4.30pm
Friday 8am-4pm



ALMONDCO

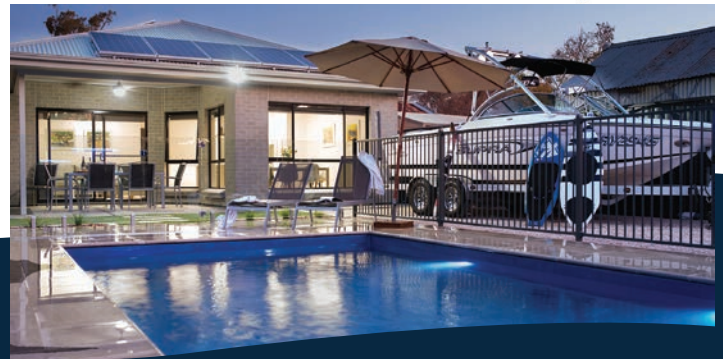
Sturt Highway, Renmark,
South Australia 5341
Phone 08 8586 8800
www.almondco.com.au

BOATS and BEDZZZ
HOUSEBOAT STAYS

HOLIDAY BY THE RIVER MURRAY

CHOOSE FROM OUR HOUSEBOATS OR VILLAS

RENMARK RIVER
Villas



Located a five minute walk from the Renmark township, Boats and Bedzzz offer two houseboats (9 and 10-berth) for moored accommodation. The 10-berth vessel is also available to hire and drive for those looking to cruise the river. Adjacent from the houseboat moorings is Renmark River Villas, two luxury villas able to accommodate eight people each with off-street parking for vehicles and boats. One villa even has a private in-ground heated pool!



James Avenue, Renmark | 0429 865 749 | boatsandbedzzz.com.au



Wilkadene Houseboats & Cottage

The best location to begin your holiday in the Riverland

Our houseboats rival the comforts of a 5-star hotel, yet you are only a short walk away from endless outback saltbush plains. We have a range of boats to suit most needs. Amazon & Outback Star are two superbly appointed boats with some unique features. Elly Mae is a charming boat offering comfort, ease of operation and exceptional

79 Wilkinson Road, Murtho
P (08) 8595 8188
E info@wilkadene.com.au
wilkadene.com.au

value. Our location is possibly the best spot to begin your holiday in the Riverland. Wilkadene Cottage is comprised of 3 queen bedrooms, fully self-contained kitchen and outdoor patio with barbeque, sun lounge, alfresco dining, and fire bucket. Have a go on the tennis court or hire a kayak or SUP and spend the day on the river.



Paringa Hotel Motel

The best value for money pub in the Riverland!

Just 5kms from Renmark, the Paringa Hotel Motel offers affordable accommodation and great country hospitality. Open seven days a week for lunch and dinner offering delicious country pub meals with gaming machines, TAB, Keno, beer garden and bottle shop. A free shuttle service is available to take you to and from the hotel, within Renmark and Paringa.

Sturt Highway, Paringa
P (08) 8595 5005
www.paringahotel.com.au



Mundic Waterfront Cottages

Absolute waterfront accommodation!

A unique location for families and groups offering an exclusive waterfront experience. Choose from two self-contained cottages (sleeping 6 and 8) each with a private jetty OR Mundic Homestead, a beautiful character filled home with water views (sleeping up to 14) set amongst a working vineyard.

21054 Sturt Highway, Paringa
P 0429 693 706
E bookings@mundic.com.au
www.mundic.com.au

Each property has large gardens, modern facilities and outdoor entertaining areas. Enjoy water sports such as skiing (boat ramp on site) and fishing or hire a canoe to explore the magnificent waterways. A great base for bushwalking and family holidays. Enjoy the serenity just minutes from restaurants and shops.



OPEN
Daily
7AM - LATE

BREAKFAST
 LUNCH
 DINNER

NANYA

BISTRO

(08) 8586 6755 | Murray Ave, Renmark
renmarkhotel.com.au

SIGN UP
NOW
Your
REWARDS
PROGRAMME

ANGOVE

SINCE 1886

FAMILY WINEMAKERS



CELLAR DOOR SALES & TASTING

VISIT THE RIVERLAND'S OLDEST FAMILY OWNED WINERY & DISTILLERY

- Home of Australia's #1 Organic Wine Brand - Angove Organic ◀
- Home of Australia's Best Distiller - St Agnes Distillery* ◀
- Home of Stone's Original Green Ginger Wine ◀
- Home of Blind Tiger Organic Gin ◀

Monday - Friday 10am - 5pm | Saturday 11am - 4pm | Sunday 11am - 4pm

Bookmark Avenue, Renmark | Ph 8580 3148 | angove.com.au

**Tasting Australia Spirit Awards, 2021*



Showcasing an amazing selection of dishes created from the best in local produce, set amongst the stunning newly redeveloped gardens. Rustons modern and contemporary building provides flexible dining and events spaces along with alfresco options and is conveniently located on the fringe of Renmark. Enjoy sipping our onsite distilled Rose Gin in our perfectly manicured gardens.

Open daily from 9.30am

Ph 8586 6191 | rustons.com.au
70 Moorna St, Renmark



River Murray Houseboats

Come stay awhile, we're on river time!

Come experience a unique self-drive holiday on a River Murray Houseboat. The locally owned and operated business has won numerous South Australian Tourism Awards in recent years. With a wide variety of seven luxury spa houseboats in their fleet, make sure you contact River Murray Houseboats for your next adventure on the river.

Lock 5 Road, Paringa
Rob & Jenna Hughes
P 0427 899 102
www.rivermurrayhouseboats.com.au



Coosh & Co

Home | Fashion | Living

Coosh & Co is a beautiful little concept store with a unique blend of homewares, fashion and lifestyle pieces that have been especially curated just for you. We've sourced our beautiful wares through local South Australian and Australian creatives with a story to tell! We'd love you to come along for the ride, and share our journey as there's more exciting things to follow!

Shop 14 Renmark Avenue, Renmark
P 0413 156 830
www.cooshandco.com



Cammie's Antiques

Be charmed at Cammie's Antiques, stockists of a range of furniture and collectables including china, books, and radios, kitchenalia, tools and gardenalia, petrolanalia, enamel signs, toys and prams, restoration products, handles and knobs, jams and soaps. Also stockists of Annie Sloan Chalk Paint. Located on the Sturt Highway at Paringa and open seven days 9am to 5pm.

16 Sturt Highway, Paringa
P (08) 8595 5400
E antiques@cammies.com.au
cammiesantiques.com.au



RIVERLAND

SOUTH AUSTRALIA

Wrapped not only in the river lands, but in fruit groves, olives, and agricultural vistas, the Riverland is a foodie's haven.

We are also proud to produce some of the most interesting wine varieties in the world, as well as award winning craft beers and spirits.

Here, you can swag it in the wilderness, bring the van, go glamping, stay in a character rich B&B, a fine historic pub, or in the lap of luxury. Why not take to the water on a houseboat, a kayak, a ski boat, or a historic paddle steamer?

Come and jump in and immerse yourself in the Riverland. This is a place to challenge yourself. To revitalize. That uplifts the human spirit. But that's also gentle, indulgent, and warm. This is where the sun shines longer than anywhere else in Australia and where your inner glow burns longer too.



RIVER TASTES MAP

Our map shows you the great tastes and drinks both on and off the beaten track in the delectable Riverland. Regularly updated by our expert team as new opportunities emerge to enjoy our Haven of Flavours — one visit will not be enough.



RIVER CAMP MAP

Self-guided travel has long been a part of the Riverland and we love our campers! Learn local secret spots, find that affordable escape or indulge in something new — let your spirit guide you in the Riverland.

visitriverland.com.au



Scan

for your next adventure

Loch Luna



Natural Indulgence

Take time to indulge yourself. Whether you do this with activity or rest, the Riverland will indulge you.



Nature's Awe

Discover awe inspiring nature, wander free and explore your way in the Riverland's natural wonders.



Haven of Flavours

Taste the flavours of the Riverland, create your own food trail or shopping list - be tempted and tantalized.



Best of the Blogs

Looking for more information, detail or guidance? Scan here and look no further - our best blogs await you.



Riverland Events

Vibrant and diverse events await the young and the young at heart. Plan, book in and get excited today!



Our River

362 kilometres of the best stretch of the Mighty Murray River, learn about it and love it as we all do.



BERRI RIVERSIDE HOLIDAY PARK

Proudly owned by the Berri War Memorial Community Centre

"YOUR DESTINATION OF CHOICE"

Situated alongside the beautiful Murray River, and centrally situated, with easy access to explore the Riverland.

The park offers a relaxing and peaceful setting, ideal for families or couples enjoying the freedom of caravanning and even those on business.



Pizza Nights



Mini Golf



Cruise the Murray



Park Features:

- Group-stay accommodation up to 54 people
- Pet-friendly sites
- From basic ensuite cabins up to 3 bedroom luxury cabins
- 104 Grass sites – including drive-through sites
- Ensued powered sites
- Resort-style swimming pools
- BBQs and modern camp kitchens
- Jumping pillows and playground
- Function room
- Social firepit to enjoy marshmallows
- Golf driving range
- BMX bike track
- Wood-fired pizza oven
- Kiosk and coffee shop
- Mini golf set in a beautiful landscaped garden

Cruise the Murray River

- Select your meal package
- Groups up to 55 welcome
- Licensed bar
- For all occasions

P: (08) 8582 3723
E: info@berriholidaypark.com.au
W: www.berriholidaypark.com.au

87 Riverview Drive Berri SA 5343
PO Box 237 Berri SA 5343





FOR COUPLES

The naturally warm climate, rich history and diverse landscape of the Riverland has long been an alluring drawcard for couples. And, with a vast array of hotels, cellar doors and distilleries, the Riverland is the perfect place to unwind or get active.

Dine in at one of the grand stately pubs for lunch, overlooking the riverbanks and watch water skiers go whizzing past or dive right in yourself! There are many beautiful clifftop and nature walks to explore, some with art inspired themes and sculptures. Tee off with a round of golf at one of the six beautifully manicured golf courses in the region. Purchase delicious local produce from roadside stalls, providores or visit one of the regular local markets.

FOR FAMILIES

For families wanting a fun filled holiday with kids, the Riverland has it all. Hire a houseboat and cruise the river with your family to really spend quality time together.

Take the boat with you, and you can all take part in any river related activity, be it water skiing, kneeboarding, or cruising.

Teens can also enjoy time on the river with a jet ski, swimming or tubing. There's also a host of playgrounds to explore including the Monash Adventure Playground, Loxton Pioneer Playground, Morgan Rail to River Adventure Park or Barmera Playspace, to name a few. The Riverland is home to some of the state's best caravan parks, which are perfectly positioned along the river or nearby.

FOR THE FREE AT HEART

The best way to explore the Riverland is to follow the river. Be it by water on a canoe, kayak or boat, there are many amazing adventures to be had. Or, if you like your feet on land, the Riverland is home to beautiful national parks and conservation parks.

Relax with a picnic rug and take in the awe-inspiring scenery, creating romantic memories that you will treasure forever. Roll out a swag under the stars or try glamping in style.

Spend the day sampling a selection of award-winning wines in the region's cellar doors. There are several cellar doors (plus distilleries and breweries) to try, or if you wish, book a wine tour and save yourself the trouble of driving.

VISITOR INFORMATION CENTRES

ENGAGE | INSPIRE | EXPERIENCE

ADELAIDE & SUBURBS

Adelaide	08 8203 7611
Port Adelaide	08 8405 6560

ADELAIDE HILLS

Adelaide Hills – Hahndorf	08 8393 7600
---------------------------	--------------

BAROSSA

Barossa – Tanunda	08 8563 8334
Gawler	08 8522 9260
Kapunda	08 8566 2902

CLARE VALLEY

Burra & Goyder – Burra	08 8892 2154
Clare Valley – Clare	08 8842 2131

EYRE PENINSULA

Elliston	08 8687 9200
Port Lincoln	08 8683 3544
Whyalla	08 8645 7900

FLEURIEU PENINSULA

Fleurieu Coast – Yankalilla	08 8558 0240
Goolwa	08 8555 7248
McLaren Vale & Fleurieu – McLaren Vale	08 8323 9944
Victor Harbor	08 8551 0777

FLINDERS RANGES & OUTBACK

Coober Pedy	08 8672 4617
Flinders Ranges – Quorn	08 8620 0510
Hawker	08 8648 4022
Marree	08 8675 8344
Peterborough	08 8651 3355
Port Augusta – Wadlata	08 8641 9194
Port Pirie	08 8633 8700
Roxby Downs	08 8671 5941
Wilpena Pound	08 8648 0048

KANGAROO ISLAND

Penneshaw	0417 551 444
-----------	--------------

LIMESTONE COAST

Beachport	08 8735 8029
Bordertown	08 8752 1044
Millicent	08 8733 0904
Mount Gambier	08 8724 9750
Naracoorte	08 8762 1399
Penola/Coonawarra – Penola	08 8737 2391
Robe	08 8768 2465

MURRAY RIVER, LAKES & COORONG

Mannum	08 8569 1303
Murray Bridge	08 8539 1142

RIVERLAND

Barmera	08 8588 2289
Berri	08 8582 5511
Loxton	08 8584 8071
Renmark Paringa – Renmark	08 8580 3060
Waikerie District – Waikerie	08 8541 0720

YORKE PENINSULA

Ardrossan	08 8837 4195
Copper Coast – Kadina	08 8821 2333



SCAN THIS CODE FOR SA VISITOR
INFORMATION CENTRE LOCATIONS.



RV Parks & Public Campgrounds

It simply does not get any better than waking up to uninterrupted views of the Murray River from a riverbank campsite, having a front row seat to the spectacular sunsets over Lake Bonney or a quiet, secluded spot to camp under the stars.

Across the Riverland we're lucky to boast a large array of low cost or free RV parks and campsites that offer you these unique options, plus many more! Choose a site to base yourself while exploring the extensive range of attractions and experiences

spread throughout the region or simply take time to relax before continuing onto your next destination. The region's RV parks and campgrounds are proudly presented and maintained by local councils with each offering a varying range of basic facilities including toilets, BBQs,

picnic areas etc. Some sites cater for fully self-contained vehicles only, while others offer camping as well. Whether you are planning a road trip with no end date or a quick overnight stopover, there are plenty of sites that offer the river experience you may be seeking.

		(08) area code	Camping	Caravans	Fully self contained	Toilets	Power	Dump Point	Water	BBQs	Playground	Picnic Spot	Shade	Dogs*	Fires**	Waterfront	Boat Ramp	Wet weather access	Cost per night	Max stay (nights)	Notes	Available sites (bookable)
BERRI	Martin Bend, Riverview Drive	8582 5511	•	•	•	•	•	•	•	•	•	•	•	•	•	•	•	•	\$5	21	Caretaker check in on arrival	
BARMERA	North Lake, Queen Elizabeth Drive	8588 2289	•	•	•	•	•	•	•	•	•	•	•	•	•	•	•	•	TBC	21	Boat ramp unsealed. Fees may apply	
	East Lake, Queen Elizabeth Drive	8588 2289	•	•	•	•	•	•	•	•	•	•	•	•	•	•	•	•	TBC	21	No access in lawned/fenced areas. Fees may apply	
	RV Park, Sims Street	8588 2289	•	•	•	•	•	•	•	•	•	•	•	•	•	•	•	•	\$5	4	Register Barmera Visitor Centre. 8 available sites	
LYRUP	SS Ellen Park, Thayne Tce	8580 3060	•	•	•	•	•	•	•	•	•	•	•	•	•	•	•	•	\$10	7	Book online - discoverrenmark.com.au	7
RENMARK	Plush's Bend RV Park, Plush's Bend Road	8580 3060	•	•	•	•	•	•	•	•	•	•	•	•	•	•	•	•	\$10	7	Book online - discoverrenmark.com.au	30
	TM Price Rotary Park, Sturt Highway	8580 3060	•	•	•	•	•	•	•	•	•	•	•	•	•	•	•	•	\$15	1	Book online - discoverrenmark.com.au	5
MURTHO	Murtho Forest Landing, Heading Road, Murtho	8580 3060	•	•	•	•	•	•	•	•	•	•	•	•	•	•	•	•	FREE	7		
LOXTON	BIG 4 Loxton Riverfront Holiday Park RV sites	8584 7862	•	•	•	•	•	•	•	•	•	•	•	•	•	•	•	•	\$9			
	Loxton Golf Club, Edwards Road	8584 1490	•	•	•	•	•	•	•	•	•	•	•	•	•	•	•	•	\$25			
	Thiele's Sandbar, off Tower Drive	8584 8071	•	•	•	•	•	•	•	•	•	•	•	•	•	•	•	•	FREE	21	Dry weather access recommended	
	Rilli Reserve, Briers Road	8584 8071	•	•	•	•	•	•	•	•	•	•	•	•	•	•	•	•	FREE	21	Dry weather access recommended	
	Milich's Landing, off Kingston Road	8584 8071	•	•	•	•	•	•	•	•	•	•	•	•	•	•	•	•	FREE	21	Limited sites	
PARUNA	Paruna Camp Grounds	8587 3003	•	•	•	•	•	•	•	•	•	•	•	•	•	•	•	•	\$10	7		
MOOROOK	Moorook Riverfront Reserve, Kingston Road	8584 8071	•	•	•	•	•	•	•	•	•	•	•	•	•	•	•	•	\$12	7	Pay Station available	
WAIKERIE	Hart Lagoon, Leonard Norman Drive	8541 0720	•	•	•	•	•	•	•	•	•	•	•	•	•	•	•	•	FREE	7	Recommended for smaller RVs / Caravans only	
	Ramco Point, Ramco Point Road	8541 0720	•	•	•	•	•	•	•	•	•	•	•	•	•	•	•	•	FREE	7	Recommended for smaller RVs / Caravans only	
	Hogwash Bend, off Cadell Valley Road	8541 0720	•	•	•	•	•	•	•	•	•	•	•	•	•	•	•	•	FREE	5		
	Lowbank	8541 0720	•	•	•	•	•	•	•	•	•	•	•	•	•	•	•	•	FREE	21		
	Holder Bend, Holder Bottom Road	8541 0720	•	•	•	•	•	•	•	•	•	•	•	•	•	•	•	•	FREE	7		
	Qualco, 229 Qualco Road		•	•	•	•	•	•	•	•	•	•	•	•	•	•	•	•	FREE	21	Limited sites - subject to flooding	

Additional dump point locations are:

RENMARK Renmark Swimming Complex
Carpark, Cowra Street
LOXTON Grant Schubert Drive
WAIKERIE Civic Avenue

Additional water refill locations are:

RENMARK Swimming Pool, Cowra Street
BERRI Water Tower Lookout, Vaughan Terrace
BERRI Senior Citizens Carpark, Crawford Terrace
LOXTON Grant Schubert Drive
WAIKERIE Civic Avenue

Information & prices are correct at the time of printing and are subject to change without notice.

*dogs must be on leash.

** fires permitted within fire ban restrictions.





TOP TRAVEL

tips

PLAN AHEAD

Allow as much time as possible to explore the Riverland, a long weekend as a minimum, but try and find 5-7 days if you can! Like you, many travellers are already in the Riverland or strongly considering it. Plan ahead, book, and we'll see you soon.

LEAVE FRUIT AND VEGGIES AT HOME

The Riverland is a **fruit fly free zone** and we want to keep it that way! Leave your fruit and veg at home and stock up on Riverland produce while you're here. To find up to date information on current fruit fly restrictions head to **fruitfly.sa.gov.au** or call the fruit fly hotline on **1300 666 010**.

WATCH FOR ANIMALS ON THE ROAD

Animals can come out of nowhere! Keep your eyes peeled, especially after dusk or before dawn — apply brakes gently, don't swerve as this can be very dangerous.

DISPOSAL POINTS AND PUBLIC TOILETS

There are free disposal points and well maintained public toilets located throughout the Riverland. Contact a Visitor Information Centre for more information.

VISIT A VISITOR INFORMATION CENTRE

Talk to a passionate local.

MINIMISE YOUR ENVIRONMENTAL IMPACT

Nature can be very delicate including our beautiful Murray River, so please be as eco-friendly as possible. Keeping waterways clean is important to us all, so please discharge your waste appropriately. Don't leave rubbish behind and ensure no trace of your visit remains when you depart. Do not remove plants or animals and treat our environment with care and respect.

KEEP THAT CARP

European carp are a common and invasive species in the river and cannot be thrown back in once caught, or a fine will apply. Significant works are being undertaken to manage carp in the river and regenerate our native species of fish for us all to enjoy. If you are keen on carp fishing, the SA Carp Frenzy held on Lake Bonney might be a great reason to visit!

DON'T WALK AMONGST THE VINES

Soil borne pests and diseases are easily transferred by shoes and an outbreak could seriously damage the Riverland's wine industry. If you are joining a vineyard tour, please follow your guides instructions closely. If you are not on an organised tour, please don't walk amongst our vines.

FIRE DANGER

Fire season generally runs from 15 November to 15 April, when there are strict conditions on lighting fires. On Total Fire Ban Day all fires are banned, including campfires. On days of high fire danger know your risk and have a plan to stay safe. Download the Country Fire Service (CFS) App or use the CFS Facebook page to stay informed. Observe daily weather forecasts and Fire Danger Ratings and listen for warning messages from the CFS on local radio stations. Bushfire safety information is available by contacting the Bushfire Information Hotline on 1300 362 361 (TTY 13 36 77) or visit cfs.sa.gov.au



Advertisers directory

ACCOMMODATION

Berri Hotel.....	berrihotel.com.au
Berri Riverside Holiday Park.....	berriholidaypark.com.au
Big4 Blanchetown Riverside Holiday Park.....	blanchetownriverside.com.au
Big4 Loxton Riverfront Holiday Park.....	loxtonholidaypark.com.au
Big4 Renmark Riverfront Holiday Park.....	big4renmark.com.au
Boats and Bedzzz Houseboat Stays.....	boatsandbedzzz.com.au
Cobdogla Station Caravan Park.....	cobdoglacaravanpark.com.au
Discovery Parks - Lake Bonney.....	discoveryholidayparks.com.au
Green & Gold Houseboats.....	08 8541 2001
Griffens Marina Blanchetown.....	08 8540 5250
Kingston-On-Murray Caravan Park.....	komcaravanpark.com.au
Loxton Hotel.....	loxtonhotel.com.au
Morgan Colonial Motel.....	morganmotel.com.au
Morgan Riverside Caravan Park.....	morganriversidecaravanpark.com.au
Mundic Waterfront Cottages.....	mundic.com.au
Our Little Gem B&B.....	ourlittlegembb.business.site
Paringa Hotel Motel.....	08 8595 5005
Pike River Luxury Villas and Woolshed.....	pikeriver.com.au
Renmark Holiday Apartments.....	renmarkholidayapartments.com.au
Renmark Hotel.....	renmarkhotel.com.au
Renmark Houseboats.....	renmarkhouseboats.com.au
River Murray Houseboats.....	rivermurrayhouseboats.com.au
Riverbend Caravan Park, Renmark.....	riverbendrenmark.com.au
Riverbush Holiday Cottages.....	riverbush.com.au
Riverline Cottage.....	riverlinecottage.com.au
Riverside Estate Renmark.....	riversideestaterenmark.com.au
Roonka Riverfront Homestead Cottages.....	0418 849 054
Salter's Station.....	0438 405 023
Templeton On Murray.....	templetononmurray.com.au
The River Block.....	theriverblock.com.au
Waikerie Holiday Park.....	08 8541 2651
Waikerie Hotel Motel.....	08 8541 2999
Wilkadene Houseboats & Cottage.....	wilkadene.com.au

ATTRACTIONS & EXPERIENCES

Barmera Playspace.....	barmeratourism.com.au
Cammies Antiques.....	cammiesantiques.com.au
Loveday Internment Collection and Display.....	barmeratourism.com.au
Loxton Pioneer Playground.....	visitloxt.com.au
Monash Adventure Playground.....	08 8582 5511
Riverglen View Art Studio.....	frankelglassandbooks.com.au
Rocky's Hall Of Fame And Pioneer Museum.....	08 8588 2289

EVENTS

Barmera Main Street Markets.....	barmeratourism.com.au
----------------------------------	-----------------------

FOOD, WINE AND BEVERAGES

919 Wines.....	919wines.com.au
Almondco.....	almondco.com.au
Angove Family Winemakers.....	angove.com.au
Arrosto Coffee.....	arrostocoffee.com.au
Ashley's Resturant.....	citrusvalleymotel.com.au
Banrock Station.....	banrockstation.com.au
Barmera Club.....	barmeraclub.com.au
Berri Hotel.....	berrihotel.com.au
Burk Salter Boutique Winery.....	0438 405 023
Cobdogla Club.....	cobdoglaclub.com.au
Eleni's at Mallee Estate.....	malleeestate.com.au
Flavours of the Riverland.....	flavoursoftheriverland.com.au
Loxton Hotel.....	loxtonhotel.com.au
Paringa Hotel Motel.....	08 8595 5005
Renmark Club.....	renmarkclub.com.au
Renmark Hotel.....	renmarkhotel.com.au
River Jacks Cafe.....	08 8582 4309
Rustons.....	rustons.com.au
Salena Estate.....	salenaestate.com.au
The Lakes Cafe and Bakery.....	08 8588 2000
The Monash Club.....	08 8583 5342
The Historic Overland Corner Hotel.....	ochotel.com.au
Twenty Third Street Distillery.....	08 8586 8500
Viewpoint Cafe.....	08 8541 2444
Waikerie Hotel Motel.....	08 8541 2999
Woolshed Brewery.....	wilkadene.com.au

GENERAL SERVICES

Berri Newsagency.....	berri.newspower.com.au
Coosh & Co.....	cooshandco.com
Roly's Automotive Servies.....	08 8582 2667

INFORMATION & BOOKINGS

Morgan Visitor Information Centre.....	mid-murray.sa.gov.au
Renmark Paringa Visitor Information Centre.....	discoverrenmark.com.au

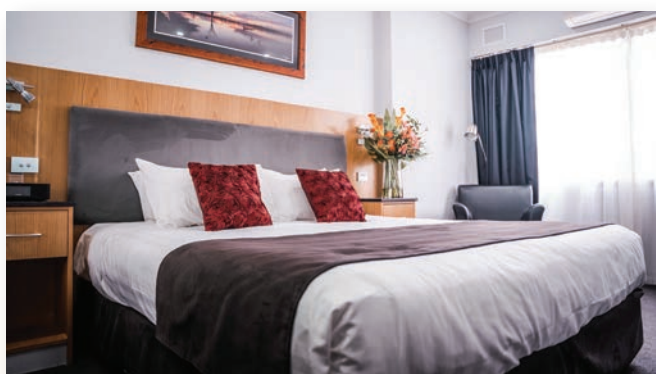
TOURS AND TRAVELLERS

Hertz Riverland.....	hertz.com.au
Lion Allan Thurmer Recrational Trail.....	08 8582 5511
Murray Princess.....	murrayprincess.com.au
Murray River Trails.....	murrayrivertrails.com.au
Renmark River Cruises and Boat Hire.....	renmarkrivercruises.com.au
Rivergum Cruises.....	0477 333 896
RV Friendly Barmera.....	berribarmera.sa.gov.au/rv



WAIKERIE HOTEL MOTEL

Our warm country hospitality is what makes us one of the best destinations in the Riverland. With only a walking distance from the Waikerie Riverfront and beautiful country sights to see around the region, we have accommodation to suit all travellers. Whether you are travelling solo, a couple, family, or after a short getaway from the busyness of everyday life, we've got you covered.



HOTEL & MOTEL ACCOMMODATION

2 McCoy Street, Waikerie

Short walk to the riverfront and centered in town, the Waikerie Hotel Motel is the perfect place to stay while in Waikerie and surrounding towns complete with Dining, Bar and Function facilities, perfect for any type of getaway



FAMILY ROOMS & CABIN ACCOMMODATION

20 Ian Oliver Drive, Waikerie

Situated just off the highway, surrounded by lush green vineyards and just a 1km from the Main Hotel in town, our recently purchased Offsite Motel Accommodation is perfect for larger travelling groups and families complete with Family Rooms and Cabins with its own outdoor kitchen, and self-sufficient facilities and just a short drive into town to our Main Hotel's Restaurant & Bar facilities.



OSCAR'S BISTRO

2 McCoy Street, Waikerie

Oscar's Bar & Bistro is the perfect destination to wind down, relax and enjoy country-style hospitality whether you're a local, visitor or just a passing through. After the rebuild in 2011, we pride ourselves in the warm & cozy atmosphere we love to provide our customers and with it deliver the best service in the Riverland.



www.waikeriehotel.com | (08) 8541 2999





BIG4 Renmark Riverfront Holiday Park

Book on-line or call to make your reservation today!

Reservations: 1300 664 612
Ph: 08 8586 811 E: stay@big4renmark.com.au
Cnr Patey Drive and Sturt Hwy, Renmark SA 5341



www.big4renmark.com.au